

## DATASHEET

# Uroplakin II Rabbit Monoclonal Antibody(ARB600)

CAT. NO. ARB6894

### KEY FEATURES

|               |              |              |             |
|---------------|--------------|--------------|-------------|
| Target        | Uroplakin II | Clonality    | Monoclonal  |
| Clone ID      | ARB600       | Applications | IHC         |
| Source / Host | Rabbit       | Dilution     | 1:100-1:200 |
| Reactivity    | Human        | Storage      | at-20°C     |

### BACKGROUND

Uroplakin II is one of the four main members (Ia, Ib, II, III) of the Uroplakin family, and it is a specific glycoprotein associated with urothelial differentiation. Uroplakin II is negatively expressed in most normal tissues and is mainly highly expressed in urothelial carcinoma, which makes Uroplakin II mainly used to distinguish urothelial carcinoma from other tumors. The expression of Uroplakin II is correlated with the degree of differentiation of urothelial carcinoma, with a higher proportion of expression in better-differentiated cases. Compared with Uroplakin III, the immunohistochemistry of Uroplakin II has higher sensitivity for urothelial carcinoma.

### APPLICATION

To ensure optimal assay performance, AREX recommends conducting reagent titration tailored to each testing system for optimal detection results.

|     |               |
|-----|---------------|
| IHC | 1:100 - 1:200 |
|-----|---------------|

\*Results are sample-specific. Please refer to your local assay conditions and test parameters for reference.

### PRODUCT OVERVIEW

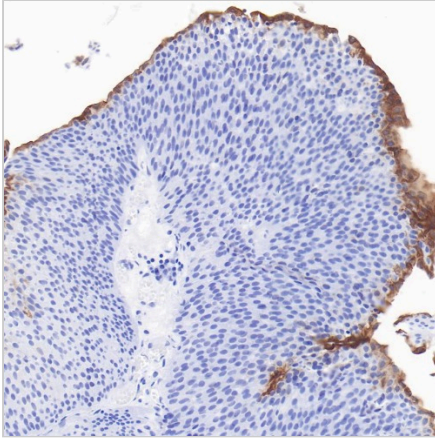
|                        |                                                                                                                              |
|------------------------|------------------------------------------------------------------------------------------------------------------------------|
| Predicted Molecular Wt | 20kDa                                                                                                                        |
| Purity                 | ProA affinity purified IgG                                                                                                   |
| Subcellular location   | Cytoplasm and membrane                                                                                                       |
| Swissprot ID           | O00526                                                                                                                       |
| Immunogen              | Synthetic peptide.                                                                                                           |
| Storage Buffer         | PBS 59%, Sodium azide 0.01%, Glycerol 40%, BSA 0.05%                                                                         |
| Recommended method     | Heat induced epitope retrieval with Tris-EDTA buffer (pH 9.0), primary antibody incubate at RT (18° C-25° C) for 30 minutes. |

\*AREX continuously optimizes our products. Webpage content may not reflect the latest updates. For inquiries, please contact [info@arexbio.com](mailto:info@arexbio.com) or your local distributor.

\*Clone Number, Reactivity, Source/Host and Clonality can be found in the product name and Key Features section above.

**DATASHEET****Uroplakin II Rabbit Monoclonal Antibody(ARB600)**

CAT. NO. ARB6894

**DATA**

Immunohistochemical staining of urothelial carcinoma tissue using Uroplakin II Monoclonal Antibody(ARB600)

**STORAGE**

Store at 4°C short term. For long term storage, store at -20°C, avoiding freeze/thaw cycles.

**NOTE**

For Research Use Only. Not for diagnostic, therapeutics, prophylactic or in vivo use.

More information: [www.arexbio.com](http://www.arexbio.com)