

## DATASHEET

# LRP Rabbit Monoclonal Antibody(ARB598)

CAT. NO. ARB6892

### KEY FEATURES

Target	LRP	Clonality	Monoclonal
Clone ID	ARB598	Applications	IHC
Source / Host	Rabbit	Dilution	1:100-1:200
Reactivity	Human	Storage	at-20°C

### BACKGROUND

Lung resistance protein (LRP) is a protein with a molecular weight of 104-110 kDa, and also belongs to one of the phenotypes of multidrug resistance (MDR), which mainly generates resistance by participating in the obstruction of intercellular drug transport or by decreasing the effective concentration of the target drug by the entry of the drug into the cytoplasmic vesicles into an atrial segregation. LRP mediates resistance to alkylating agents and platinum, which are not mediated by the P-glycoproteins and MRP and which are all DNA-targeted. It can be expressed in many tumour tissues and positivity predicts insensitivity to chemotherapy and is mainly used in the study of chemotherapeutic agents for various malignancies.

### APPLICATION

To ensure optimal assay performance, AREX recommends conducting reagent titration tailored to each testing system for optimal detection results.

IHC	1:100 - 1:200
-----	---------------

\*Results are sample-specific. Please refer to your local assay conditions and test parameters for reference.

### PRODUCT OVERVIEW

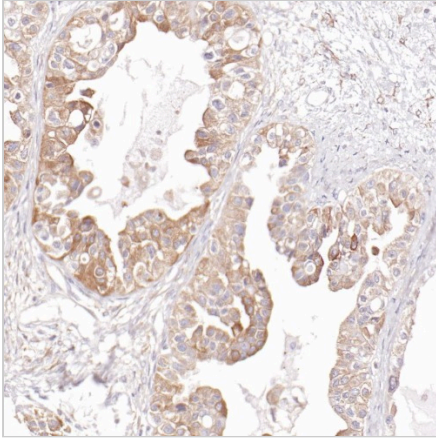
Predicted Molecular Wt	99kDa
Purity	ProA affinity purified IgG
Subcellular location	Cytoplasm
SwissProt ID	Q14764
Immunogen	Synthetic peptide.
Storage Buffer	PBS 59%, Sodium azide 0.01%, Glycerol 40%, BSA 0.05%
Recommended Method	Heat induced epitope retrieval with Tris-EDTA buffer (pH 9.0), primary antibody incubate at RT (18°C-25°C) for 30 minutes.

\*AREX continuously optimizes our products. Webpage content may not reflect the latest updates. For inquiries, please contact [info@arexbio.com](mailto:info@arexbio.com) or your local distributor.

\*Clone Number, Reactivity, Source/Host and Clonality can be found in the product name and Key Features section above.

**DATASHEET****LRP Rabbit Monoclonal Antibody(ARB598)**

CAT. NO. ARB6892

**DATA**

Immunohistochemical staining of endometrial cancer cells using LRP Monoclonal Antibody(ARB598)

**STORAGE**

Store at 4°C short term. For long term storage, store at -20°C, avoiding freeze/thaw cycles.

**NOTE**

For Research Use Only. Not for diagnostic, therapeutics, prophylactic or in vivo use.

More information: [www.arexbio.com](http://www.arexbio.com)