

## DATASHEET

# GST- $\pi$ Rabbit Monoclonal Antibody(ARB597)

CAT. NO. ARB6891

### KEY FEATURES

Target	GST- $\pi$	Clone ID	ARB597
Source / Host	Rabbit	Reactivity	Human
Applications	IHC	Dilution	1:100-1:200
Clonality	Monoclonal	Storage	at-20°C

### BACKGROUND

Glutathione S-transferases (GSTs) are a family of enzymes that play an important role in detoxification by catalyzing the conjugation of many hydrophobic and electrophilic compounds with reduced glutathione. Based on their biochemical, immunologic and structural properties, the soluble GSTs are categorized into 4 main classes: alpha, mu, pi and theta. This GST family member is a polymorphic gene encoding active, functionally different GSTP1 variant proteins that are thought to function in xenobiotic metabolism and play a role in susceptibility to cancer and other diseases. Glutathione-S-transferase (GST- $\pi$ ) is widely present in the cytosol and mitochondria of organs throughout the human body, mainly catalysing the combination of GSH with a wide range of electrophilic substances to form GS-X, which is then excreted out of the cell to achieve detoxification. GST- $\pi$  is highly expressed in a wide range of tumours and has been associated with tumour therapeutic resistance (adriamycin, cisplatin, azathioprine, cyclophosphamide and tumocortin, among others) and is more clinically important for determining whether tumour cells have developed resistance, as is the case with P-gp and TopoII, it is more clinically significant to determine whether the tumour cells are drug-resistant or not.

### APPLICATION

To ensure optimal assay performance, AREX recommends conducting reagent titration tailored to each testing system for optimal detection results.

Application	Dilution Ratio
IHC	1:100 - 1:200

\*Results are sample-specific. Please refer to your local assay conditions and test parameters for reference.

### OVERVIEW

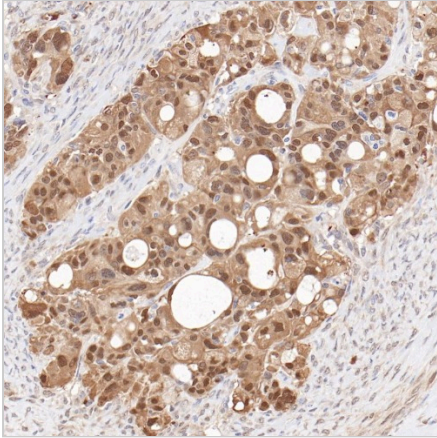
Predicted Molecular Wt	23kDa
Purity	ProA affinity purified IgG
Subcellular location	Nucleus, Cytoplasm
SwissProt ID	P09211
Immunogen	Synthetic peptide.
Storage Buffer	PBS 59%, Sodium azide 0.01%, Glycerol 40%, BSA 0.05%
Recommended Method	Heat induced epitope retrieval with Tris-EDTA buffer (pH 9.0), primary antibody incubate at RT (18°C-25°C) for 30 minutes.
Alternative Names	Glutathione S-transferase P (GST class-pi) (GSTP1-1)
Gene Symbol	GSTP1
Entrez Gene	2950

\*AREX continuously optimizes our products. Webpage content may not reflect the latest updates. For inquiries, please contact [info@arexbio.com](mailto:info@arexbio.com) or your local distributor.

\*Clone Number, Reactivity, Source/Host and Clonality can be found in the product name and Key Features section above.

**DATASHEET****GST- $\pi$  Rabbit Monoclonal Antibody(ARB597)**

CAT. NO. ARB6891

**DATA**

Immunohistochemical staining of human ovarian carcinoma using GST- $\pi$  Monoclonal Antibody(ARB597).

**STORAGE**

Store at 4°C short term. For long term storage, store at -20°C, avoiding freeze/thaw cycles.

**NOTE**

For Research Use Only. Not for diagnostic, therapeutics, prophylactic or in vivo use.

More information: [www.arexbio.com](http://www.arexbio.com)