

## DATASHEET

# GS Rabbit Monoclonal Antibody(ARB596)

CAT. NO. ARB6890

### KEY FEATURES

Target	GS	Clonality	Monoclonal
Clone ID	ARB596	Applications	IHC
Source / Host	Rabbit	Dilution	1:100-1:200
Reactivity	Human	Storage	at-20°C

### BACKGROUND

Glutamine synthetase (GS), also known as glutamate-ammonia ligase (GLUL), catalyzes the de novo synthesis of glutamine from glutamate and ammonia. GS is ubiquitously expressed in normal tissue, particularly high expression in the liver and brain. GS expression is elevated in various cancers. High expression of GS in breast cancer patients is associated with larger tumor size and high level of HER2 expression. It is a predictor of poor survival in patients with glioma and liver cancers.

### APPLICATION

To ensure optimal assay performance, AREX recommends conducting reagent titration tailored to each testing system for optimal detection results.

IHC	1:100 - 1:200
-----	---------------

\*Results are sample-specific. Please refer to your local assay conditions and test parameters for reference.

### PRODUCT OVERVIEW

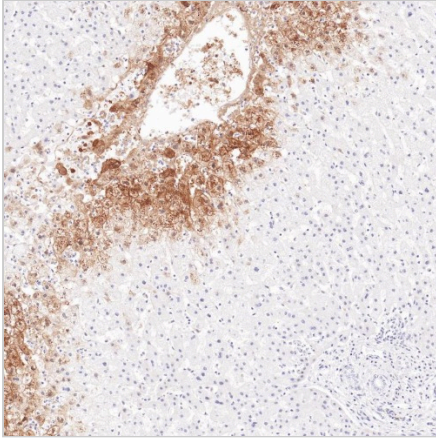
Predicted Molecular Wt	42kDa
Purity	ProA affinity purified IgG
Subcellular location	Cytoplasm
SwissProt ID	P15104
Immunogen	Synthetic peptide.
Storage Buffer	PBS 59%, Sodium azide 0.01%, Glycerol 40%, BSA 0.05%
Recommended Method	Heat induced epitope retrieval with Tris-EDTA buffer (pH 9.0), primary antibody incubate at RT (18°C-25°C) for 30 minutes.

\*AREX continuously optimizes our products. Webpage content may not reflect the latest updates. For inquiries, please contact [info@arexbio.com](mailto:info@arexbio.com) or your local distributor.

\*Clone Number, Reactivity, Source/Host and Clonality can be found in the product name and Key Features section above.

**DATASHEET****GS Rabbit Monoclonal Antibody(ARB596)**

CAT. NO. ARB6890

**DATA**

Immunohistochemical staining of human liver tissue using GS Monoclonal Antibody(ARB596)

**STORAGE**

Store at 4°C short term. For long term storage, store at -20°C, avoiding freeze/thaw cycles.

**NOTE**

For Research Use Only. Not for diagnostic, therapeutics, prophylactic or in vivo use.

More information: [www.arexbio.com](http://www.arexbio.com)