

## DATASHEET

# Cadherin 16 Rabbit Monoclonal Antibody(ARB593)

CAT. NO. ARB6887

### KEY FEATURES

Target	Cadherin 16	Clonality	Monoclonal
Clone ID	ARB593	Applications	IHC
Source / Host	Rabbit	Dilution	1:100-1:200
Reactivity	Human	Storage	at-20°C

### BACKGROUND

Cadherins are calcium-dependent cell adhesion proteins. They preferentially interact with themselves in a homophilic manner in connecting cells. Cadherin 16 is a member of the cadherin family of cell adhesion molecules that is found in the basolateral membrane of renal tubular epithelial cells of the distal tubules and collecting duct. Studies have shown high sensitivity and specificity of Cadherin 16 to chromophobe renal cell carcinoma (RCC) and oncocytoma. Conversely, low reactivity was observed with clear cell RCC and papillary RCC.

### APPLICATION

To ensure optimal assay performance, AREX recommends conducting reagent titration tailored to each testing system for optimal detection results.

IHC	1:100 - 1:200
-----	---------------

\*Results are sample-specific. Please refer to your local assay conditions and test parameters for reference.

### PRODUCT OVERVIEW

Predicted Molecular Wt	90kDa
Purity	ProA affinity purified IgG
Subcellular location	Membrane/cytoplasm
SwissProt ID	O75309
Immunogen	Synthetic peptide
Storage Buffer	PBS 59%, Sodium azide 0.01%, Glycerol 40%, BSA 0.05%
Recommended Method	Heat induced epitope retrieval with Tris-EDTA buffer (pH 9.0), primary antibody incubate at RT (18°C-25°C) for 30 minutes.

\*AREX continuously optimizes our products. Webpage content may not reflect the latest updates. For inquiries, please contact [info@arexbio.com](mailto:info@arexbio.com) or your local distributor.

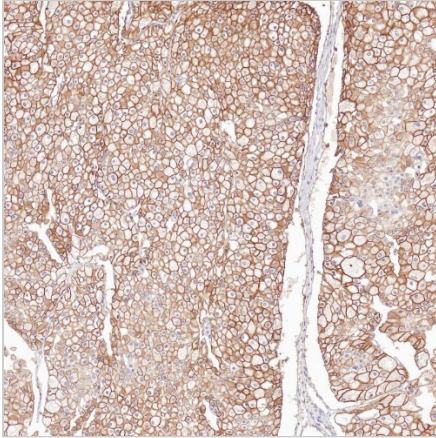
\*Clone Number, Reactivity, Source/Host and Clonality can be found in the product name and Key Features section above.

**DATASHEET**

**Cadherin 16 Rabbit Monoclonal Antibody(ARB593)**

CAT. NO. ARB6887

**DATA**



Immunohistochemical staining of chromophobe renal cell carcinoma using Cadherin 16 Monoclonal Antibody(ARB593)

**STORAGE**

Store at 4°C short term. For long term storage, store at -20°C, avoiding freeze/thaw cycles.

**NOTE**

For Research Use Only. Not for diagnostic, therapeutics, prophylactic or in vivo use.

More information: [www.arexbio.com](http://www.arexbio.com)