

**DATASHEET**

**CD70 Rabbit Monoclonal Antibody(ARB592)**

CAT. NO. ARB6886

**KEY FEATURES**

Target	CD70	Clonality	Monoclonal
Clone ID	ARB592	Applications	IHC
Source / Host	Rabbit	Dilution	1:100-1:200
Reactivity	Human	Storage	at-20°C

**BACKGROUND**

70 is a type II transmembrane glycoprotein and a member of the tumor necrosis factor ligand superfamily (TNFSF), also known as CD27L and TNFSF7. CD70 is normally expressed on medullary thymic epithelial cells. Its expression is induced on activated lymphoid cells (B cells, T cells and NK cells) and dendritic cells. CD70 is closely related to the occurrence of tumors and the prognosis of patients. At present, the indications for preclinical development are mainly breast cancer, ovarian cancer, blood tumor and kidney cancer.

**APPLICATION**

To ensure optimal assay performance, AREX recommends conducting reagent titration tailored to each testing system for optimal detection results.

IHC	1:100 - 1:200
-----	---------------

\*Results are sample-specific. Please refer to your local assay conditions and test parameters for reference.

**PRODUCT OVERVIEW**

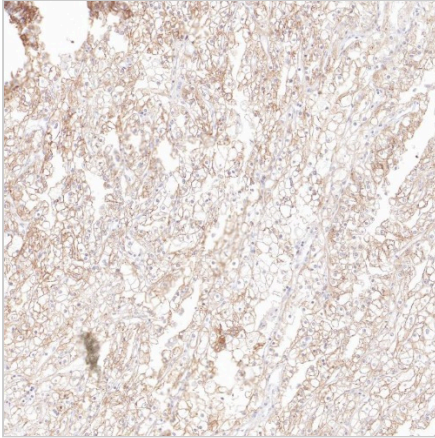
Predicted Molecular Wt	22kDa
Purity	ProA affinity purified IgG
Subcellular location	Membrane
SwissProt ID	P32970
Immunogen	Synthetic peptide.
Storage Buffer	PBS 59%, Sodium azide 0.01%, Glycerol 40%, BSA 0.05%
Recommended Method	Heat induced epitope retrieval with Tris-EDTA buffer (pH 9.0), primary antibody incubate at RT (18°C-25°C) for 30 minutes.

\*AREX continuously optimizes our products. Webpage content may not reflect the latest updates. For inquiries, please contact [info@arexbio.com](mailto:info@arexbio.com) or your local distributor.

\*Clone Number, Reactivity, Source/Host and Clonality can be found in the product name and Key Features section above.

**DATASHEET****CD70 Rabbit Monoclonal Antibody(ARB592)**

CAT. NO. ARB6886

**DATA**

Immunohistochemical staining of human kidney tissue using CD70 Monoclonal Antibody(ARB592)

**STORAGE**

Store at 4°C short term. For long term storage, store at -20°C, avoiding freeze/thaw cycles.

**NOTE**

For Research Use Only. Not for diagnostic, therapeutics, prophylactic or in vivo use.

More information: [www.arexbio.com](http://www.arexbio.com)