

DATASHEET

SLC34A2 Rabbit Monoclonal Antibody(ARB589)

CAT. NO. ARB6881

KEY FEATURES

Target	SLC34A2	Clonality	Monoclonal
Clone ID	ARB589	Applications	IHC
Source / Host	Rabbit	Dilution	1:100-1:200
Reactivity	Human	Storage	at-20°C

BACKGROUND

The sodium-dependent phosphate transport protein 2B (NaPi-2b, SLC34A2) is a sodium dependent inorganic phosphate transporter that regulates phosphate homeostasis in various organs, including the lung, liver and endometrium. SLC34A2 is predominantly expressed in lung and endometrium. In tumor tissue, it is mainly expressed in ovarian cancer and endometrial cancer. Research has shown that the NaPi2b protein encoded by SLC34A2 is highly expressed in ovarian cancer tissues, especially in serous ovarian cancer, which makes it an important biomarker for assisting in the diagnosis of ovarian cancer. In addition, the expression level of SLC34A2 is closely related to the prognosis of ovarian cancer patients and can be used as an indicator to evaluate patient survival and disease progression.

APPLICATION

To ensure optimal assay performance, AREX recommends conducting reagent titration tailored to each testing system for optimal detection results.

IHC	1:100 - 1:200
-----	---------------

*Results are sample-specific. Please refer to your local assay conditions and test parameters for reference.

PRODUCT OVERVIEW

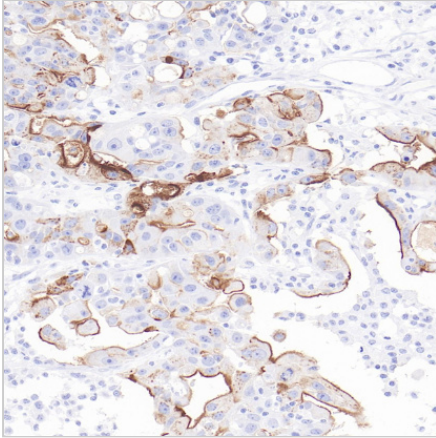
Predicted Molecular Wt	76kDa
Purity	ProA affinity purified IgG
Subcellular location	Membrane
Swissprot ID	O95436
Immunogen	Synthetic peptide.
Storage Buffer	PBS 59%, Sodium azide 0.01%, Glycerol 40%, BSA 0.05%
Recommended Method	Heat induced epitope retrieval with Tris-EDTA buffer (pH 9.0), primary antibody incubate at RT (18°C-25°C) for 30 minutes.

*AREX continuously optimizes our products. Webpage content may not reflect the latest updates. For inquiries, please contact info@arexbio.com or your local distributor.

*Clone Number, Reactivity, Source/Host and Clonality can be found in the product name and Key Features section above.

DATASHEET**SLC34A2 Rabbit Monoclonal Antibody(ARB589)**

CAT. NO. ARB6881

DATA

Immunohistochemical staining of human ovarian cancer tissue using SLC34A2 Rabbit Monoclonal Antibody(ARB589)

STORAGE

Store at 4°C short term. For long term storage, store at -20°C, avoiding freeze/thaw cycles.

NOTE

For Research Use Only. Not for diagnostic, therapeutics, prophylactic or in vivo use.

More information: www.arexbio.com