

DATASHEET

CD90 Rabbit Monoclonal Antibody(ARB588)

CAT. NO. ARB6880

KEY FEATURES

Target	CD90	Clonality	Monoclonal
Clone ID	ARB588	Applications	IHC
Source / Host	Rabbit	Dilution	1:100-1:200
Reactivity	Human	Storage	at-20°C

BACKGROUND

CD90(THY1) is a 25-37-kDa heavily N-glycosylated, glycosylated phosphatidylinositol (GPI) anchored cell surface protein. It has been found to regulate cell adhesion, migration, apoptosis, axon growth, cell-cell and cell-matrix interactions, T-cell activation, and fibrosis. Several reports have shown that CD90 has an important role in cancer in regulating cancer cell proliferation, metastasis, and angiogenesis. CD90 is usually expressed on thymocytes, mesenchymal stem cells, hematopoietic stem cells, natural killer cells, neurons, endothelial cells, renal glomerular mesangial cells, follicular dendritic cells, fibroblasts, and myofibroblasts. CD90 is an important prognostic marker in many cancers, such as gastric cancer and colon cancer, et al. Consequently, therapies that target CD90 have great promise in treating many cancers. However, several studies also indicate a contradictory role for CD90, where it acts as a tumor suppressor, such as ovarian adenocarcinoma, nasopharyngeal carcinoma, and neuroblastoma.

APPLICATION

To ensure optimal assay performance, AREX recommends conducting reagent titration tailored to each testing system for optimal detection results.

IHC	1:100 - 1:200
-----	---------------

*Results are sample-specific. Please refer to your local assay conditions and test parameters for reference.

PRODUCT OVERVIEW

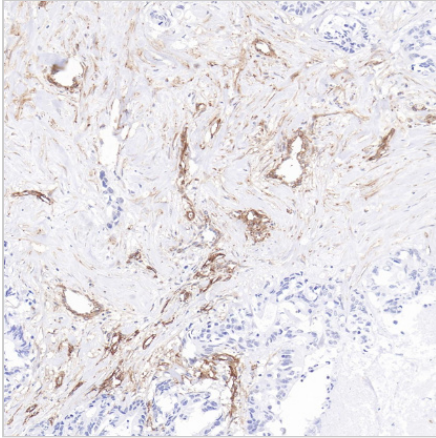
Predicted Molecular Wt	18kDa
Purity	ProA affinity purified IgG
Subcellular location	Cytoplasm and membrane
Swissprot ID	P04216
Immunogen	Synthetic peptide.
Storage Buffer	PBS 59%, Sodium azide 0.01%, Glycerol 40%, BSA 0.05%
Recommended Method	Heat induced epitope retrieval with Tris-EDTA buffer (pH 9.0), primary antibody incubate at RT (18°C-25°C) for 30 minutes.

*AREX continuously optimizes our products. Webpage content may not reflect the latest updates. For inquiries, please contact info@arexbio.com or your local distributor.

*Clone Number, Reactivity, Source/Host and Clonality can be found in the product name and Key Features section above.

DATASHEET**CD90 Rabbit Monoclonal Antibody(ARB588)**

CAT. NO. ARB6880

DATA

Immunohistochemical staining of human colon cancer tissue using CD90 Rabbit Monoclonal Antibody(ARB588)

STORAGE

Store at 4°C short term. For long term storage, store at -20°C, avoiding freeze/thaw cycles.

NOTE

For Research Use Only. Not for diagnostic, therapeutics, prophylactic or in vivo use.

More information: www.arexbio.com