

DATASHEET

HER3 Rabbit Monoclonal Antibody(ARB585)

CAT. NO. ARB6877

KEY FEATURES

Target	HER3	Clonality	Monoclonal
Clone ID	ARB585	Applications	IHC
Source / Host	Rabbit	Dilution	1:100-1:200
Reactivity	Human	Storage	at-20°C

BACKGROUND

HER3 (Human Epidermal Growth Factor Receptor 3), a member of the EGFR tyrosine kinase receptor family, functions as a critical dimerization partner for other ERBB receptors (notably HER2) despite lacking intrinsic kinase activity. HER3 is predominantly expressed in kidney and tonsil. In tumor tissue, it is mainly expressed in breast cancer and lung cancer. HER3 is a critical biomarker and therapeutic target in oncology, with its overexpression and activation detected via immunohistochemistry (IHC), fluorescence in situ hybridization (FISH), or serum assays correlating strongly with aggressive tumor behavior, therapy resistance and poor prognosis. Pathologically, HER3+ tumor cells exhibit increased epithelialmesenchymal transition (EMT) signatures and stromal invasion.

APPLICATION

To ensure optimal assay performance, AREX recommends conducting reagent titration tailored to each testing system for optimal detection results.

IHC	1:100 - 1:200
-----	---------------

*Results are sample-specific. Please refer to your local assay conditions and test parameters for reference.

PRODUCT OVERVIEW

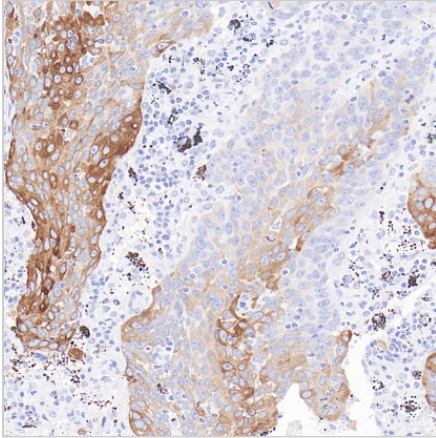
Predicted Molecular Wt	148kDa
Purity	ProA affinity purified IgG
Subcellular location	Membrane and cytoplasm
Swissprot ID	P21860
Immunogen	Synthetic peptide.
Storage Buffer	PBS 59%, Sodium azide 0.01%, Glycerol 40%, BSA 0.05%
Recommended Method	Heat induced epitope retrieval with Tris-EDTA buffer (pH 9.0), primary antibody incubate at RT (18°C-25°C) for 30 minutes.

*AREX continuously optimizes our products. Webpage content may not reflect the latest updates. For inquiries, please contact info@arexbio.com or your local distributor.

*Clone Number, Reactivity, Source/Host and Clonality can be found in the product name and Key Features section above.

DATASHEET**HER3 Rabbit Monoclonal Antibody(ARB585)**

CAT. NO. ARB6877

DATA

Immunohistochemical staining of human lung tissue using HER3 Rabbit Monoclonal Antibody(ARB585)

STORAGE

Store at 4°C short term. For long term storage, store at -20°C, avoiding freeze/thaw cycles.

NOTE

For Research Use Only. Not for diagnostic, therapeutics, prophylactic or in vivo use.

More information: www.arexbio.com