

DATASHEET

IgG4 Rabbit Monoclonal Antibody(ARB575)

CAT. NO. ARB6867

KEY FEATURES

Target	IgG4	Clone ID	ARB575
Source / Host	Rabbit	Reactivity	Human
Applications	IHC	Dilution	1:100-1:200
Clonality	Monoclonal	Storage	at-20°C

BACKGROUND

IgG4 - related sclerosing disease has been recognized as a systemic disease entity characterized by an elevated serum IgG4 level, sclerosing fibrosis, and diffuse lymphoplasmacytic infiltration with the presence of many IgG4 - positive plasma cells. Clinical manifestations are apparent in the pancreas, bile duct, gall bladder, lacrimal gland, salivary gland, retroperitoneum, kidney, lung, breast, thyroid, and prostate. Immunohistochemical studies in the case of IgG4 - related sclerosing disease not only exhibit significantly more than normal IgG4 - positive plasma cells in affected tissues but also significantly higher IgG4/IgG ratios (typically > 30%). IgG4 antibodies will dominate the IgG response in schistosomiasis, lymphatic filariasis, and in patients after allergen immunotherapy. Unlike the other IgG subclasses, IgG4 does not activate complement. A combined IgA - IgG4 deficiency has been associated with recurrent pyogenic infections.

APPLICATION

To ensure optimal assay performance, AREX recommends conducting reagent titration tailored to each testing system for optimal detection results.

Application	Dilution Ratio
IHC	1:100 - 1:200

*Results are sample-specific. Please refer to your local assay conditions and test parameters for reference.

OVERVIEW

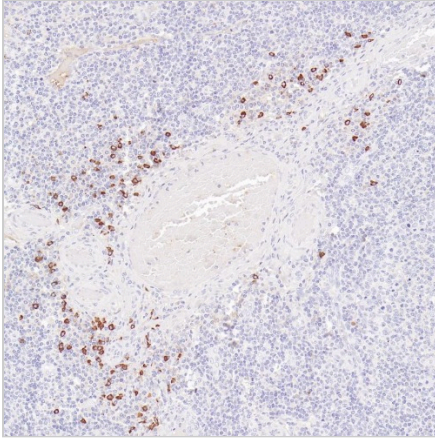
Predicted Molecular Wt	36kDa
Purity	ProA affinity purified IgG
Subcellular location	Secreted
Swissprot ID	P01861
Immunogen	Synthetic peptide.
Storage Buffer	PBS 59%, Sodium azide 0.01%, Glycerol 40%, BSA 0.05%
Recommended Method	Heat induced epitope retrieval with Tris - EDTA buffer (pH 9.0), primary antibody incubate at RT (18°C - 25°C) for 30 minutes.
Alternative Names	Ig gamma-4 chain C region
Gene Symbol	IGHG4
Entrez Gene	3503

*AREX continuously optimizes our products. Webpage content may not reflect the latest updates. For inquiries, please contact info@arexbio.com or your local distributor.

*Clone Number, Reactivity, Source/Host and Clonality can be found in the product name and Key Features section above.

DATASHEET**IgG4 Rabbit Monoclonal Antibody(ARB575)**

CAT. NO. ARB6867

DATA

Immunohistochemical staining of human tonsil tissue sections using IgG4 Rabbit Monoclonal Antibody (ARB575).

STORAGE

Store at 4°C short term. For long term storage, store at -20°C, avoiding freeze/thaw cycles.

NOTE

For Research Use Only. Not for diagnostic, therapeutics, prophylactic or in vivo use.

More information: www.arexbio.com