

**DATASHEET**

**Von Willebrand Factor(VWF) Rabbit Monoclonal Antibody(ARB571)**

**CAT. NO. ARB6863**

**KEY FEATURES**

Target	Von Willebrand Factor(VWF)	Clonality	Monoclonal
Clone ID	ARB571	Applications	IHC
Source / Host	Rabbit	Dilution	1:100-1:200
Reactivity	Human	Storage	at-20°C

**BACKGROUND**

Human von Willebrand factor (VWF, or factor VIII-related antigen) is a 309 kDa multimeric plasma glycoprotein, important in the maintenance of hemostasis, it promotes adhesion of platelets to the sites of vascular injury by forming a molecular bridge between sub-endothelial collagen matrix and platelet-surface receptor complex GPIb-IX-V. Von Willebrand factor also acts as a chaperone for coagulation factor VIII, delivering it to the site of injury, stabilizing its heterodimeric structure and protecting it from premature clearance from plasma. Von Willebrand factor is synthesized by endothelial cells and is reported to be expressed in a number of tumors of vascular origin. IHC results aid in the classification of acute myeloid leukemia FAB type M7, angiosarcoma and epithelioid hemangioendothelioma.

**APPLICATION**

To ensure optimal assay performance, AREX recommends conducting reagent titration tailored to each testing system for optimal detection results.

IHC	1:100 - 1:200
-----	---------------

\*Results are sample-specific. Please refer to your local assay conditions and test parameters for reference.

**PRODUCT OVERVIEW**

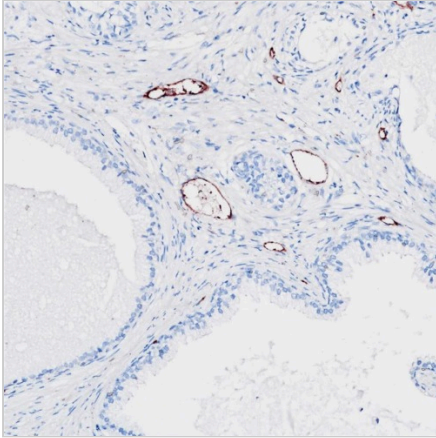
Predicted Molecular Wt	309kDa
Purity	ProA affinity purified IgG
Subcellular location	Cytoplasm
Swissprot ID	P04275
Immunogen	Synthetic peptide corresponding to residues within aa1150-1250 of von Willebrand factor was used as an immunogen
Storage Buffer	PBS 59%, Sodium azide 0.01%, Glycerol 40%, BSA 0.05%
Recommended method	Heat induced epitope retrieval with Tris-EDTA buffer (pH 9.0), primary antibody incubate at RT (18°C-25°C) for 30 minutes

\*AREX continuously optimizes our products. Webpage content may not reflect the latest updates. For inquiries, please contact [info@arexbio.com](mailto:info@arexbio.com) or your local distributor.

\*Clone Number, Reactivity, Source/Host and Clonality can be found in the product name and Key Features section above.

**DATASHEET****Von Willebrand Factor(VWF) Rabbit Monoclonal Antibody(ARB571)**

CAT. NO. ARB6863

**DATA**

Immunohistochemical staining of human prostate tissue using Von Willebrand Factor (VWF) Rabbit Monoclonal Antibody(ARB571).

**STORAGE**

Store at 4°C short term. For long term storage, store at -20°C, avoiding freeze/thaw cycles.

**NOTE**

For Research Use Only. Not for diagnostic, therapeutics, prophylactic or in vivo use.

More information: [www.arexbio.com](http://www.arexbio.com)