

DATASHEET

Vimentin Rabbit Monoclonal Antibody(ARB570)

CAT. NO. ARB6862

KEY FEATURES

Target	Vimentin	Clonality	Monoclonal
Clone ID	ARB570	Applications	IHC
Source / Host	Rabbit	Dilution	1:100-1:200
Reactivity	Human	Storage	at-20°C

BACKGROUND

Vimentin is the most common member of intermediate filament (IF) family and one of the main components in cytoskeleton structure. It is essential in the role of cell integrity and cytoskeletal stability. The reorganization of vimentin, similar to all IF proteins, occurs during different stages of the cell cycle and cell signaling by a site - specific phosphorylation (serine and threonine residues). Vimentin is expressed in a wide variety of mesenchymal cell types: fibroblasts, endothelial cells etc., and in a number of other cell types derived from mesoderm, e.g., mesothelium and ovarian granulosa cells. However, in non - vascular smooth muscle cells, vimentin is often replaced by desmin. In striated muscle, vimentin is also replaced by desmin. However, during regeneration, vimentin is reexpressed. Cells of the lympho - hematopoietic system (lymphocytes, macrophages etc.) also express vimentin, sometimes in scarce amounts. In tumor tissues, it is present in many different neoplasms but is particularly expressed in those originated from mesenchymal cells. In combination with a panel of antibodies, it is used to identify tumor with mesenchymal origin and malignant melanoma. Additionally, vimentin is a useful control marker for proper tissue processing.

APPLICATION

To ensure optimal assay performance, AREX recommends conducting reagent titration tailored to each testing system for optimal detection results.

IHC	1:100 - 1:200
-----	---------------

*Results are sample-specific. Please refer to your local assay conditions and test parameters for reference.

PRODUCT OVERVIEW

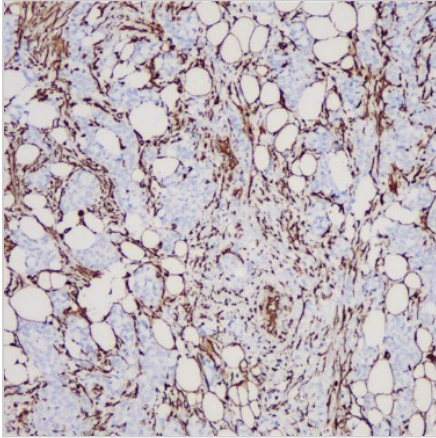
Predicted Molecular Wt	54kDa
Purity	ProA affinity purified IgG
Subcellular location	Cytoplasm
Swissprot ID	P08670
Immunogen	Synthetic peptide corresponding to Vimentin residues within aa366 - 466 of Vimentin was used as an immunogen
Storage Buffer	PBS 59%, Sodium azide 0.01%, Glycerol 40%, BSA 0.05%
Recommended method	Heat induced epitope retrieval with Tris-EDTA buffer (pH 9.0), primary antibody incubate at RT (18°C-25°C) for 30 minutes

*AREX continuously optimizes our products. Webpage content may not reflect the latest updates. For inquiries, please contact info@arexbio.com or your local distributor.

*Clone Number, Reactivity, Source/Host and Clonality can be found in the product name and Key Features section above.

DATASHEET**Vimentin Rabbit Monoclonal Antibody(ARB570)**

CAT. NO. ARB6862

DATA

Immunohistochemical staining of human breast cancer tissue using Vimentin Rabbit Monoclonal Antibody(ARB570)

STORAGE

Store at 4°C short term. For long term storage, store at -20°C, avoiding freeze/thaw cycles.

NOTE

For Research Use Only. Not for diagnostic, therapeutics, prophylactic or in vivo use.

More information: www.arexbio.com