

## DATASHEET

# TROP-2 Rabbit Monoclonal Antibody(ARB566)

CAT. NO. ARB6858

### KEY FEATURES

|               |            |            |             |
|---------------|------------|------------|-------------|
| Target        | TROP-2     | Clone ID   | ARB566      |
| Source / Host | Rabbit     | Reactivity | Human       |
| Applications  | IHC        | Dilution   | 1:100-1:200 |
| Clonality     | Monoclonal | Storage    | at-20°C     |

### BACKGROUND

Trop-2 or Tumor-associated calcium signal transducer 2, also known as epithelial glycoprotein-1 antigen (EGP-1), is a protein that in humans is encoded by the TACSTD2 gene. This transmembrane glycoprotein functions in a variety of cell signaling pathways and was first elucidated as a transducer of an intracellular calcium signal. Trop-2 expression has been demonstrated to depend on a large variety of transcription factors. Trop-2 is involved in several cell signaling pathways, of which many are associated with tumorigenesis.

### APPLICATION

To ensure optimal assay performance, AREX recommends conducting reagent titration tailored to each testing system for optimal detection results.

| Application | Dilution Ratio |
|-------------|----------------|
| IHC         | 1:100 - 1:200  |

\*Results are sample-specific. Please refer to your local assay conditions and test parameters for reference.

### OVERVIEW

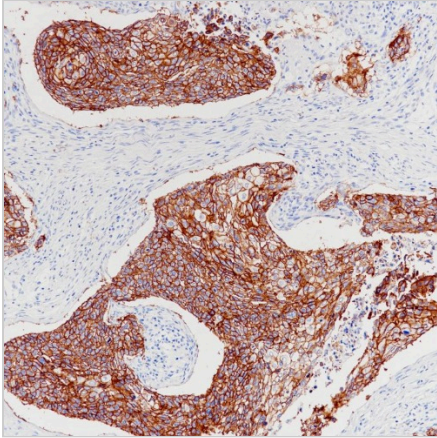
|                        |  |
|------------------------|--|
| Predicted Molecular Wt | 36kDa  |
| Purity                 | ProA affinity purified IgG   |
| Subcellular location   | Membrane   |
| Swissprot ID           | P09758   |
| Immunogen              | Synthetic peptide.   |
| Storage Buffer         | PBS 59%, Sodium azide 0.01%, Glycerol 40%, BSA 0.05%   |
| Recommended method     | Heat induced epitope retrieval with Tris-EDTA buffer (pH 9.0), primary antibody incubate at RT (18°C-25°C) for 30 minutes  |
| Alternative Names      | Tumor-associated calcium signal transducer 2 (Cell surface glycoprotein Trop-2) (Membrane component chromosome 1 surface marker 1) (Pancreatic carcinoma marker protein GA733-1) |
| Gene Symbol            | TACSTD2  |
| Entrez Gene            | 4070   |

\*AREX continuously optimizes our products. Webpage content may not reflect the latest updates. For inquiries, please contact [info@arexbio.com](mailto:info@arexbio.com) or your local distributor.

\*Clone Number, Reactivity, Source/Host and Clonality can be found in the product name and Key Features section above.

**DATASHEET****TROP-2 Rabbit Monoclonal Antibody(ARB566)**

CAT. NO. ARB6858

**DATA**

Immunohistochemical staining of human lung squamous cell carcinoma tissue using TROP-2 Rabbit Monoclonal Antibody(ARB566).

**STORAGE**

Store at 4°C short term. For long term storage, store at -20°C, avoiding freeze/thaw cycles.

**NOTE**

For Research Use Only. Not for diagnostic, therapeutics, prophylactic or in vivo use.

More information: [www.arexbio.com](http://www.arexbio.com)