

DATASHEET

Topoisomerase II- α Rabbit Monoclonal Antibody(ARB563)

CAT. NO. ARB6855

KEY FEATURES

Target	Topoisomerase II- α	Clonality	Monoclonal
Clone ID	ARB563	Applications	IHC
Source / Host	Rabbit	Dilution	1:100-1:200
Reactivity	Human	Storage	at-20°C

BACKGROUND

The topoisomerase II- α isoform is a 170 kDa nuclear protein and plays an important role in DNA synthesis and RNA transcription, as well as chromosomal segregation during mitosis. Topoisomerase II- α is reported to be a sensitive and specific marker of late S-, G2- & M-phases in transformed and developmentally regulated normal cells, and has been shown to be over-expressed in many human cancers. Decreased expression of Topoisomerase II- α is the predominant mechanism of resistance to several chemotherapeutic agents.

APPLICATION

To ensure optimal assay performance, AREX recommends conducting reagent titration tailored to each testing system for optimal detection results.

IHC	1:100 - 1:200
-----	---------------

*Results are sample-specific. Please refer to your local assay conditions and test parameters for reference.

PRODUCT OVERVIEW

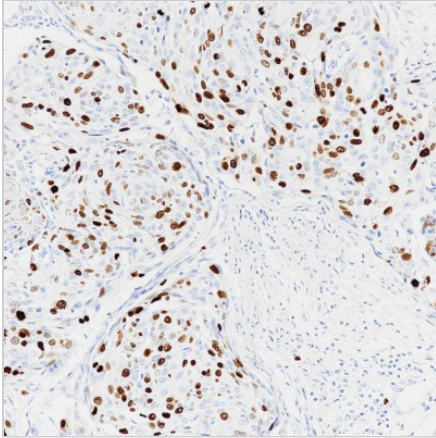
Predicted Molecular Wt	174kDa
Purity	ProA affinity purified IgG
Subcellular location	Nucleus
Swissprot ID	P11388
Immunogen	Synthetic peptide corresponding to Topo II α residues within aa1431 - 1531 of Topo II α was used as an immunogen
Storage Buffer	PBS 59%, Sodium azide 0.01%, Glycerol 40%, BSA 0.05%
Recommended method	Heat induced epitope retrieval with Tris-EDTA buffer (pH 9.0), primary antibody incubate at RT (18°C-25°C) for 30 minutes

*AREX continuously optimizes our products. Webpage content may not reflect the latest updates. For inquiries, please contact info@arexbio.com or your local distributor.

*Clone Number, Reactivity, Source/Host and Clonality can be found in the product name and Key Features section above.

DATASHEET**Topoisomerase II- α Rabbit Monoclonal Antibody(ARB563)**

CAT. NO. ARB6855

DATA

Immunohistochemical staining of human cervical carcinoma tissue using Topoisomerase II- α Rabbit Monoclonal Antibody(ARB563)

STORAGE

Store at 4°C short term. For long term storage, store at -20°C, avoiding freeze/thaw cycles.

NOTE

For Research Use Only. Not for diagnostic, therapeutics, prophylactic or in vivo use.

More information: www.arexbio.com