

## DATASHEET

# TLE1 Rabbit Monoclonal Antibody(ARB562)

CAT. NO. ARB6854

### KEY FEATURES

Target	TLE1	Clonality	Monoclonal
Clone ID	ARB562	Applications	IHC
Source / Host	Rabbit	Dilution	1:100-1:200
Reactivity	Human	Storage	at-20°C

### BACKGROUND

TLE1 binds to a number of transcription factors. It inhibits NF-kappa-B-regulated gene expression, also inhibits the transcriptional activation mediated by FOXA2, and by CTNNB1 and TCF family members in Wnt signaling. It enhances FOXG1/BF-1- and HES1-mediated transcriptional repression. TLE1 is widely expressed in normal and cancer tissues. TLE1 is generally used for diagnosis of synovial sarcoma.

### APPLICATION

To ensure optimal assay performance, AREX recommends conducting reagent titration tailored to each testing system for optimal detection results.

IHC	1:100 - 1:200
-----	---------------

\*Results are sample-specific. Please refer to your local assay conditions and test parameters for reference.

### PRODUCT OVERVIEW

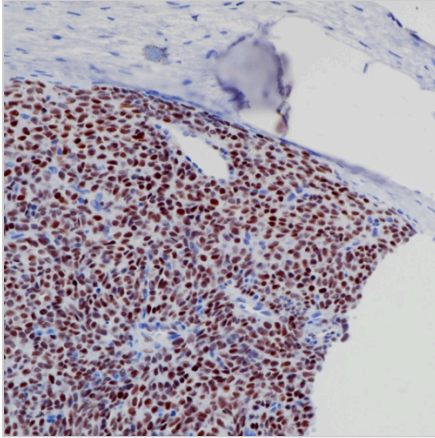
Predicted Molecular Wt	83kDa
Purity	ProA affinity purified IgG
Subcellular location	Nucleus
Swissprot ID	Q04724
Immunogen	Full length protein corresponding to Human TLE1
Storage Buffer	PBS 59%, Sodium azide 0.01%, Glycerol 40%, BSA 0.05%
Recommended Method	Heat induced epitope retrieval with Tris-EDTA buffer (pH 9.0), primary antibody incubate at RT (18°C-25°C) for 30 minutes

\*AREX continuously optimizes our products. Webpage content may not reflect the latest updates. For inquiries, please contact [info@arexbio.com](mailto:info@arexbio.com) or your local distributor.

\*Clone Number, Reactivity, Source/Host and Clonality can be found in the product name and Key Features section above.

**DATASHEET****TLE1 Rabbit Monoclonal Antibody(ARB562)**

CAT. NO. ARB6854

**DATA**

Immunohistochemical staining of human synovial sarcoma tissue using TLE1 Rabbit Monoclonal Antibody(ARB562)

**STORAGE**

Store at 4°C short term. For long term storage, store at -20°C, avoiding freeze/thaw cycles.

**NOTE**

For Research Use Only. Not for diagnostic, therapeutics, prophylactic or in vivo use.

More information: [www.arexbio.com](http://www.arexbio.com)