

DATASHEET

TIA-1 Rabbit Monoclonal Antibody(ARB559)

CAT. NO. ARB6851

KEY FEATURES

Target	TIA-1	Clonality	Monoclonal
Clone ID	ARB559	Applications	IHC
Source / Host	Rabbit	Dilution	1:100-1:200
Reactivity	Human	Storage	at-20°C

BACKGROUND

TIA - 1 (T - cell inhibitory antigen - 1) is a cytotoxic granule associated protein. Located within a type of lymphocyte with cell lysis ability. TIA - 1 is mainly expressed in non - activated cytotoxic cells and is positive in tumors derived from T cells or NK cells. All lymphoma derived from B lymphocytes show negative expression. TIA - 1 expression in T - cell malignancies may help in differentiating LGL leukemia (high expression) from T - cell lymphocytosis and other T - cell diseases (low expression). TIA - 1 may also be used to label tumor - infiltrating lymphocytes in the study of immune response to malignancies.

APPLICATION

To ensure optimal assay performance, AREX recommends conducting reagent titration tailored to each testing system for optimal detection results.

IHC	1:100 - 1:200
-----	---------------

*Results are sample-specific. Please refer to your local assay conditions and test parameters for reference.

PRODUCT OVERVIEW

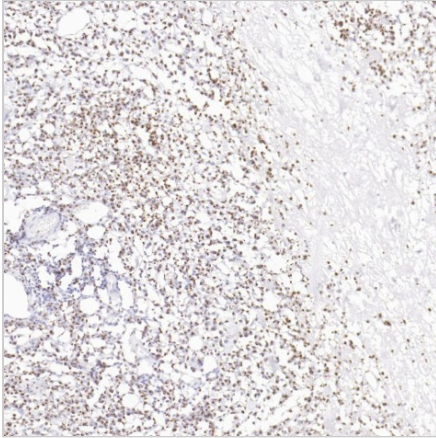
Predicted Molecular Wt	43kDa
Purity	ProA affinity purified IgG
Subcellular location	Cytoplasmic granules
Swissprot ID	P31483
Immunogen	Synthetic peptide.
Storage Buffer	PBS 59%, Sodium azide 0.01%, Glycerol 40%, BSA 0.05%
Recommended Method	Heat induced epitope retrieval with Tris - EDTA buffer (pH 9.0), primary antibody incubate at RT (18°C - 25°C) for 30 minutes.

*AREX continuously optimizes our products. Webpage content may not reflect the latest updates. For inquiries, please contact info@arexbio.com or your local distributor.

*Clone Number, Reactivity, Source/Host and Clonality can be found in the product name and Key Features section above.

DATASHEET**TIA-1 Rabbit Monoclonal Antibody(ARB559)**

CAT. NO. ARB6851

DATA

Immunohistochemical staining of human T cell lymphoma tissue sections using TIA-1 Rabbit Monoclonal Antibody (ARB559).

STORAGE

Store at 4°C short term. For long term storage, store at -20°C, avoiding freeze/thaw cycles.

NOTE

For Research Use Only. Not for diagnostic, therapeutics, prophylactic or in vivo use.

More information: www.arexbio.com