

DATASHEET

Thyroglobulin Rabbit Monoclonal Antibody(ARB558)

CAT. NO. ARB6850

KEY FEATURES

Target	Thyroglobulin	Clonality	Monoclonal
Clone ID	ARB558	Applications	IHC
Source / Host	Rabbit	Dilution	1:100-1:200
Reactivity	Human	Storage	at-20°C

BACKGROUND

Thyroglobulin (TG) is a dimeric glycoprotein specific to the thyroid gland which belongs to the type-B carboxylesterase/lipase family. It is the precursor of the iodinated thyroid hormones triiodothyronine (T3) and thyroxine (T4). Variations in TG are associated with susceptibility to autoimmune thyroid disease type 3. Defective or impaired TG synthesis usually results in congenital goitrous hypothyroidism, virtual absence of TG in thyroid tissue, and the presence of an elevated concentration of iodalbumin. The final result of these abnormalities is a decreased rate of T3 and T4 synthesis. Thyroglobulin is found in normal thyroid and differentiated thyroid carcinoma cells, but not undifferentiated thyroid. It is a useful marker for identification of tumors with thyroid origin.

APPLICATION

To ensure optimal assay performance, AREX recommends conducting reagent titration tailored to each testing system for optimal detection results.

IHC	1:100 - 1:200
-----	---------------

*Results are sample-specific. Please refer to your local assay conditions and test parameters for reference.

PRODUCT OVERVIEW

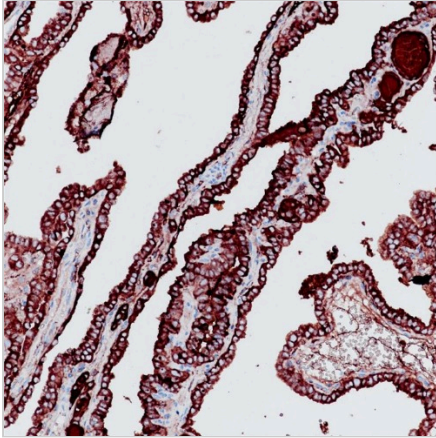
Predicted Molecular Wt	305kDa
Purity	ProA affinity purified IgG
Subcellular location	Cytoplasm
Swissprot ID	P01266
Immunogen	Synthetic peptide corresponding to Thyroglobulin residues within aa350 - 450 of Thyroglobulin was used as an immunogen
Storage Buffer	PBS 59%, Sodium azide 0.01%, Glycerol 40%, BSA 0.05%
Recommended method	Heat induced epitope retrieval with Tris-EDTA buffer (pH 9.0), primary antibody incubate at RT (18°C-25°C) for 30 minutes

*AREX continuously optimizes our products. Webpage content may not reflect the latest updates. For inquiries, please contact info@arexbio.com or your local distributor.

*Clone Number, Reactivity, Source/Host and Clonality can be found in the product name and Key Features section above.

DATASHEET**Thyroglobulin Rabbit Monoclonal Antibody(ARB558)**

CAT. NO. ARB6850

DATA

Immunohistochemical staining of human thyroid carcinoma tissue using Thyroglobulin Rabbit Monoclonal Antibody(ARB558)

STORAGE

Store at 4°C short term. For long term storage, store at -20°C, avoiding freeze/thaw cycles.

NOTE

For Research Use Only. Not for diagnostic, therapeutics, prophylactic or in vivo use.

More information: www.arexbio.com