

DATASHEET

Stathmin Rabbit Monoclonal Antibody(ARB554)

CAT. NO. ARB6846

KEY FEATURES

Target	Stathmin	Clonality	Monoclonal
Clone ID	ARB554	Applications	IHC
Source / Host	Rabbit	Dilution	1:100-1:200
Reactivity	Human	Storage	at-20°C

BACKGROUND

Stathmin/oncoprotein 18, also known as STMN1, performs an important function in regulating rapid microtubule remodeling of the cytoskeleton in response to the cell's needs. Regulation of stathmin is cell cycle dependent and controlled by the cell's protein kinases in response to specific cell signals. Stathmin can cause uncontrolled cell proliferation when mutated and not functioning properly. Overexpression of Stathmin has been associated with tumor progression in endometrial carcinomas, ovarian cancer and oral squamous-cell carcinoma. Stathmin has been found to be positive in 29% of cervical intraepithelial neoplasia (CINs) with differential expression based on the grade of the lesion as 10% CIN1, 45% CIN2, and 93% CIN3; whereas, p16 staining of the same cases was positive in 80% of CINs with 71% CIN1, 90% CIN2, and 94% CIN3. Stathmin shows similar sensitivity for CIN3 to anti-p16 (93% vs 94%) although it drops off for CIN2 (73% vs 96%). The specificity of stathmin antibody for both CIN2-3 (94%) and CIN3 (89%) is higher than that of anti-p16 (44% and 39%, respectively). Therefore, Stathmin antibody has major potential as a diagnostic marker in CIN classification over anti-p16 and it is valuable to distinguish CIN3 from the majority of low-grade precursors and negative/reactive cervical biopsies.

APPLICATION

To ensure optimal assay performance, AREX recommends conducting reagent titration tailored to each testing system for optimal detection results.

IHC	1:100 - 1:200
-----	---------------

*Results are sample-specific. Please refer to your local assay conditions and test parameters for reference.

PRODUCT OVERVIEW

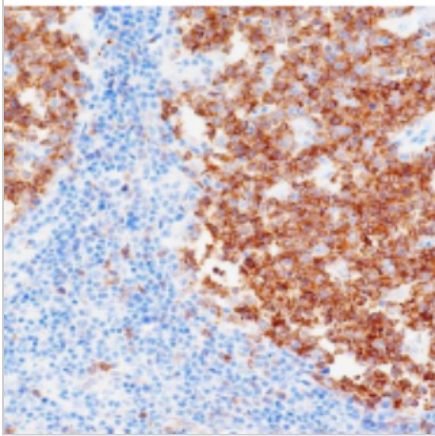
Predicted Molecular Wt	17kDa
Purity	ProA affinity purified IgG
Subcellular location	Membrane/cytoplasm
Swissprot ID	P16949
Immunogen	Synthetic peptide.
Storage Buffer	PBS 59%, Sodium azide 0.01%, Glycerol 40%, BSA 0.05%
Recommended Method	Heat induced epitope retrieval with Tris-EDTA buffer (pH 9.0), primary antibody incubate at RT (18°C-25°C) for 30 minutes

*AREX continuously optimizes our products. Webpage content may not reflect the latest updates. For inquiries, please contact info@arexbio.com or your local distributor.

*Clone Number, Reactivity, Source/Host and Clonality can be found in the product name and Key Features section above.

DATASHEET**Stathmin Rabbit Monoclonal Antibody(ARB554)**

CAT. NO. ARB6846

DATA

Immunohistochemical staining of human tonsil tissue using Stathmin Rabbit Monoclonal Antibody(ARB554)

STORAGE

Store at 4°C short term. For long term storage, store at -20°C, avoiding freeze/thaw cycles.

NOTE

For Research Use Only. Not for diagnostic, therapeutics, prophylactic or in vivo use.

More information: www.arexbio.com