

## DATASHEET

# STAT6 Rabbit Monoclonal Antibody(ARB552)

CAT. NO. ARB6844

### KEY FEATURES

Target	STAT6	Clonality	Monoclonal
Clone ID	ARB552	Applications	IHC
Source / Host	Rabbit	Dilution	1:100-1:200
Reactivity	Human	Storage	at-20°C

### BACKGROUND

STAT6, a member of the signal transducers and activators of transcription (STAT) family, has been found to form recurrent fusions with NAB2 on chromosome 12q13 in the majority of solitary fibrous tumors. Inactivated STAT6 can be found in the form of a dimer located in the cytoplasm. STAT6 and NAB2 fusion enables cytoplasmic STAT6 to migrate to the nucleus and thus allowing for detection in immunohistochemical assays. NAB2-STAT6 fusion transcripts have been reported in the majority of solitary fibrous tumors but not in meningiomas, hemangioblastomas, schwannomas, and hemangiomas. This makes STAT6 a useful marker in distinguishing solitary fibrous tumors from other morphologically similar tumors.

### APPLICATION

To ensure optimal assay performance, AREX recommends conducting reagent titration tailored to each testing system for optimal detection results.

IHC	1:100 - 1:200
-----	---------------

\*Results are sample-specific. Please refer to your local assay conditions and test parameters for reference.

### PRODUCT OVERVIEW

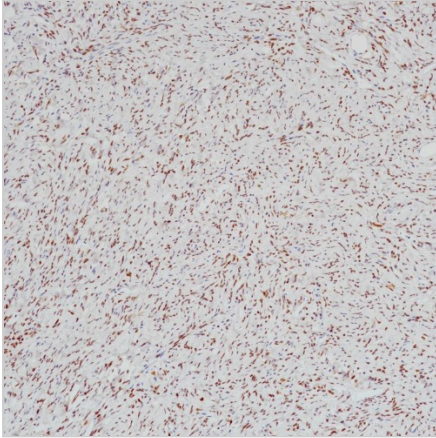
Predicted Molecular Wt	94kDa
Purity	ProA affinity purified IgG
Subcellular location	Nucleus/Cytoplasm
Swissprot ID	P42226
Immunogen	Synthetic peptide residues in human STAT6 was used as an immunogen
Storage Buffer	PBS 59%, Sodium azide 0.01%, Glycerol 40%, BSA 0.05%
Recommended method	Heat induced epitope retrieval with Tris-EDTA buffer (pH 9.0), primary antibody incubate at RT (18°C-25°C) for 30 minutes

\*AREX continuously optimizes our products. Webpage content may not reflect the latest updates. For inquiries, please contact [info@arexbio.com](mailto:info@arexbio.com) or your local distributor.

\*Clone Number, Reactivity, Source/Host and Clonality can be found in the product name and Key Features section above.

**DATASHEET****STAT6 Rabbit Monoclonal Antibody(ARB552)**

CAT. NO. ARB6844

**DATA**

Immunohistochemical staining of human solitary fibrous tumor tissue using STAT6 Rabbit Monoclonal Antibody(ARB552).

**STORAGE**

Store at 4°C short term. For long term storage, store at -20°C, avoiding freeze/thaw cycles.

**NOTE**

For Research Use Only. Not for diagnostic, therapeutics, prophylactic or in vivo use.

More information: [www.arexbio.com](http://www.arexbio.com)