

DATASHEET

SDHB Rabbit Monoclonal Antibody(ARB545)

CAT. NO. ARB6837

KEY FEATURES

Target	SDHB	Clonality	Monoclonal
Clone ID	ARB545	Applications	IHC
Source / Host	Rabbit	Dilution	1:100-1:200
Reactivity	Human	Storage	at-20°C

BACKGROUND

Succinate dehydrogenase B (SDHB) is an iron-sulfur subunit of mitochondrial complex II, a key component of the citric acid cycle and the electron transport chain, a respiratory complex that catalyzes the oxidation of succinate in the mitochondrial membrane. Many cancers are generally positive for SDHB, including renal cell carcinomas and gastrointestinal stromal tumors. A subset of RCC and GIST tumors that are associated with SDH mutations, Carney-Stratakis Syndrome or Carney Triad exhibit a loss of SDHB expression.

APPLICATION

To ensure optimal assay performance, AREX recommends conducting reagent titration tailored to each testing system for optimal detection results.

IHC	1:100 - 1:200
-----	---------------

*Results are sample-specific. Please refer to your local assay conditions and test parameters for reference.

PRODUCT OVERVIEW

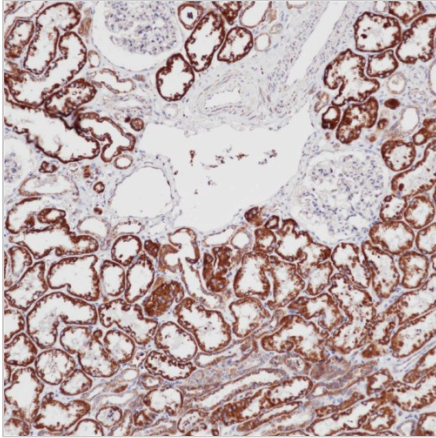
Predicted Molecular Wt	32kDa
Purity	ProA affinity purified IgG
Subcellular location	Cytoplasm
Swissprot ID	P21912
Immunogen	Synthetic peptide corresponding to residues in Human SDHB was used as an immunogen
Storage Buffer	PBS 59%, Sodium azide 0.01%, Glycerol 40%, BSA 0.05%
Recommended method	Heat induced epitope retrieval with Tris-EDTA buffer (pH 9.0), primary antibody incubate at RT (18°C-25°C) for 30 minutes

*AREX continuously optimizes our products. Webpage content may not reflect the latest updates. For inquiries, please contact info@arexbio.com or your local distributor.

*Clone Number, Reactivity, Source/Host and Clonality can be found in the product name and Key Features section above.

DATASHEET**SDHB Rabbit Monoclonal Antibody(ARB545)**

CAT. NO. ARB6837

DATA

Immunohistochemical staining of human kidney tissue using SDHB Rabbit Monoclonal Antibody(ARB545)

STORAGE

Store at 4°C short term. For long term storage, store at -20°C, avoiding freeze/thaw cycles.

NOTE

For Research Use Only. Not for diagnostic, therapeutics, prophylactic or in vivo use.

More information: www.arexbio.com