

DATASHEET

SATB2 Rabbit Monoclonal Antibody(ARB544)

CAT. NO. ARB6836

KEY FEATURES

Target	SATB2	Clonality	Monoclonal
Clone ID	ARB544	Applications	IHC
Source / Host	Rabbit	Dilution	1:100-1:200
Reactivity	Human	Storage	at-20°C

BACKGROUND

SATB2 is a nuclear matrix attachment region - binding transcription factor with developmental role in craniofacial, neural and osteoblastic differentiation. SATB2 is expressed in the epithelium of the lower gastrointestinal tract (appendix, colon and rectum). SATB2 expression is also seen in developing cortical, spinal cord neurons, osteoblasts, lymphocytes, epithelial cells of renal convoluted tubules and neurons in brain. SATB2 is not only a marker for osteoblast differentiation, but also a special marker for colorectal cancer. SATB2 plays a significant role in the development of the nervous system, skeletal development and tumor cell invasion.

APPLICATION

To ensure optimal assay performance, AREX recommends conducting reagent titration tailored to each testing system for optimal detection results.

IHC	1:100 - 1:200
-----	---------------

*Results are sample-specific. Please refer to your local assay conditions and test parameters for reference.

PRODUCT OVERVIEW

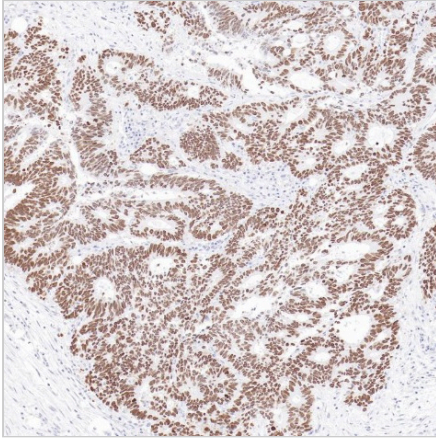
Predicted Molecular Wt	83kDa
Purity	ProA affinity purified IgG
Subcellular location	Nucleus
Swissprot ID	Q9UPW6
Immunogen	Synthetic peptide.
Storage Buffer	PBS 59%, Sodium azide 0.01%, Glycerol 40%, BSA 0.05%
Recommended Method	Heat induced epitope retrieval with Tris-EDTA buffer (pH 9.0), primary antibody incubate at RT (18°C-25°C) for 30 minutes

*AREX continuously optimizes our products. Webpage content may not reflect the latest updates. For inquiries, please contact info@arexbio.com or your local distributor.

*Clone Number, Reactivity, Source/Host and Clonality can be found in the product name and Key Features section above.

DATASHEET**SATB2 Rabbit Monoclonal Antibody(ARB544)**

CAT. NO. ARB6836

DATA

Immunohistochemical staining of human colonic fistula tissue using SATB2 Rabbit Monoclonal Antibody(ARB544)

STORAGE

Store at 4°C short term. For long term storage, store at -20°C, avoiding freeze/thaw cycles.

NOTE

For Research Use Only. Not for diagnostic, therapeutics, prophylactic or in vivo use.

More information: www.arexbio.com