

## DATASHEET

# S100P Rabbit Monoclonal Antibody(ARB541)

CAT. NO. ARB6833

### KEY FEATURES

Target	S100P	Clonality	Monoclonal
Clone ID	ARB541	Applications	IHC
Source / Host	Rabbit	Dilution	1:100-1:200
Reactivity	Human	Storage	at-20°C

### BACKGROUND

S100P is a 95-amino-acid protein and a member of the S100 family. S100P has been shown to mediate tumor growth, metastasis and invasion through the binding of Ca<sup>2+</sup> ions, receptor for advanced glycation end products, cytoskeletal protein ezrin, calyculin-binding protein/Siah-1-interacting protein and cathepsin D.S100P highly expressed in human placenta, gastrointestinal tract, and esophageal mucosa, but always negative in pancreas and liver. Overexpression of S100P has been detected in several cancers such as breast, colon, prostate, pancreatic and lung carcinomas, and the protein has been functionally implicated in carcinogenic processes.S100P could potentially serve as diagnostic marker, prognostic/predictive indicator and therapy target for different carcinomas.

### APPLICATION

To ensure optimal assay performance, AREX recommends conducting reagent titration tailored to each testing system for optimal detection results.

IHC	1:100 - 1:200
-----	---------------

\*Results are sample-specific. Please refer to your local assay conditions and test parameters for reference.

### PRODUCT OVERVIEW

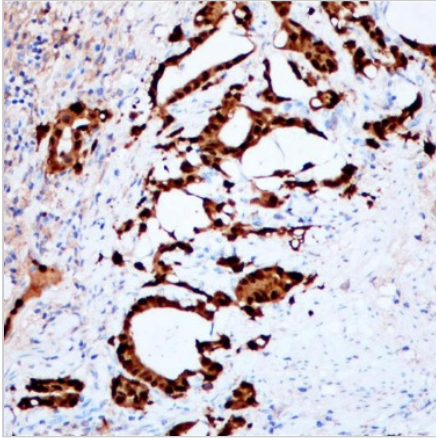
Predicted Molecular Wt	10kDa
Purity	ProA affinity purified IgG
Subcellular location	Cytoplasm, nuclear
Swissprot ID	P25815
Immunogen	Synthetic peptide according to the C-terminus of S100P was used as an immunogen
Storage Buffer	PBS 59%, Sodium azide 0.01%, Glycerol 40%, BSA 0.05%
Recommended method	Heat induced epitope retrieval with Tris-EDTA buffer (pH 9.0), primary antibody incubate at RT (18°C-25°C) for 30 minutes

\*AREX continuously optimizes our products. Webpage content may not reflect the latest updates. For inquiries, please contact [info@arexbio.com](mailto:info@arexbio.com) or your local distributor.

\*Clone Number, Reactivity, Source/Host and Clonality can be found in the product name and Key Features section above.

**DATASHEET****S100P Rabbit Monoclonal Antibody(ARB541)**

CAT. NO. ARB6833

**DATA**

Immunohistochemical staining of human gastric adenocarcinoma tissue using S100P Rabbit Monoclonal Antibody(ARB541)

**STORAGE**

Store at 4°C short term. For long term storage, store at -20°C, avoiding freeze/thaw cycles.

**NOTE**

For Research Use Only. Not for diagnostic, therapeutics, prophylactic or in vivo use.

More information: [www.arexbio.com](http://www.arexbio.com)