

DATASHEET

RRM1 Rabbit Monoclonal Antibody(ARB540)

CAT. NO. ARB6832

KEY FEATURES

Target	RRM1	Clonality	Monoclonal
Clone ID	ARB540	Applications	IHC
Source / Host	Rabbit	Dilution	1:100-1:200
Reactivity	Human	Storage	at-20°C

BACKGROUND

Ribonucleotide reductase M1 polypeptide (RRM1) is one of two non - identical subunits for ribonucleoside - diphosphate reductase, an enzyme which catalyzes the biosynthesis of deoxyribonucleotides from the corresponding ribonucleotides. It provides the precursors necessary for DNA synthesis. RRM1 is present throughout the cell division cycle but downregulated in quiescent cells. RRM1 is involved in carcinogenesis, tumor progression, and the response of non - small - cell lung cancer (NSCLC) to chemotherapy.

APPLICATION

To ensure optimal assay performance, AREX recommends conducting reagent titration tailored to each testing system for optimal detection results.

IHC	1:100 - 1:200
-----	---------------

*Results are sample-specific. Please refer to your local assay conditions and test parameters for reference.

PRODUCT OVERVIEW

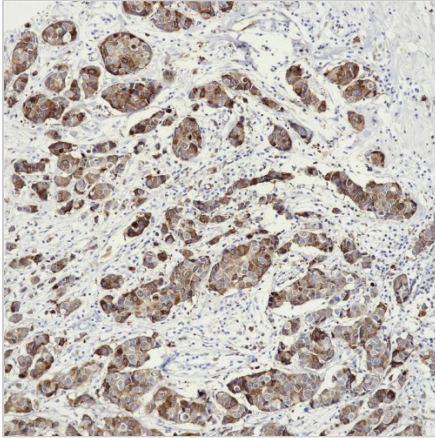
Predicted Molecular Wt	90 kDa
Purity	ProA affinity purified IgG
Subcellular location	Cytoplasm
Swissprot ID	P23921
Immunogen	Synthetic peptide corresponding to residues within aa700-800 of Human RRM1
Storage Buffer	PBS 59%, Sodium azide 0.01%, Glycerol 40%, BSA 0.05%
Recommended method	Heat induced epitope retrieval with Tris-EDTA buffer (pH 9.0), primary antibody incubate at RT (18° C-25° C) for 30 minutes.

*AREX continuously optimizes our products. Webpage content may not reflect the latest updates. For inquiries, please contact info@arexbio.com or your local distributor.

*Clone Number, Reactivity, Source/Host and Clonality can be found in the product name and Key Features section above.

DATASHEET**RRM1 Rabbit Monoclonal Antibody(ARB540)**

CAT. NO. ARB6832

DATA

Immunohistochemical staining of human breast cancer tissue sections using RRM1 Rabbit Monoclonal Antibody (ARB540). Immunohistochemical staining of human esophagus tissue sections using RRM1 Rabbit Monoclonal Antibody (ARB540).

STORAGE

Store at 4°C short term. For long term storage, store at -20°C, avoiding freeze/thaw cycles.

NOTE

For Research Use Only. Not for diagnostic, therapeutics, prophylactic or in vivo use.

More information: www.arexbio.com