

DATASHEET

PTEN Rabbit Monoclonal Antibody(ARB537)

CAT. NO. ARB6829

KEY FEATURES

Target	PTEN	Clonality	Monoclonal
Clone ID	ARB537	Applications	IHC
Source / Host	Rabbit	Dilution	1:100-1:200
Reactivity	Human	Storage	at-20°C

BACKGROUND

PTEN acts as a dual-specificity protein phosphatase, dephosphorylating tyrosine-, serine- and threonine-phosphorylated proteins. Tumor suppressor, the lipid phosphatase activity is critical for its tumor suppressor function. Antagonizes the PI3K-AKT/PKB signaling pathway by dephosphorylating phosphoinositides and thereby modulating cell cycle progression and cell survival. The unphosphorylated form cooperates with MAGI2 to suppress AKT1 activation. PTEN gene is a tumor suppressor gene that maps to chromosome 10q23. PTEN is the first oncogene with bispecific phosphatase activity discovered in humans, regulating tumor cell growth, apoptosis and migration, etc. PTEN is found to be inactivated in a variety of tumours, and its inactivation is due to methylation modifications in addition to common mutations. High-grade endometrioid carcinomas are commonly deficient in PTEN expression. PTEN gene deletion has also been found in glioblastoma, prostate cancer, melanoma, and breast cancer.

APPLICATION

To ensure optimal assay performance, AREX recommends conducting reagent titration tailored to each testing system for optimal detection results.

IHC	1:100 - 1:200
-----	---------------

*Results are sample-specific. Please refer to your local assay conditions and test parameters for reference.

PRODUCT OVERVIEW

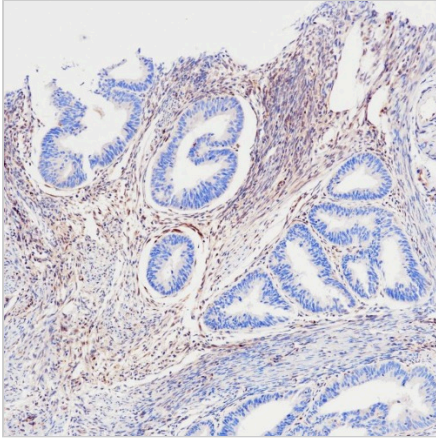
Predicted Molecular Wt	54kDa
Purity	ProA affinity purified IgG
Subcellular location	Cytoplasm, Nucleus
Swissprot ID	P60484
Immunogen	Synthetic peptide.
Storage Buffer	PBS 59%, Sodium azide 0.01%, Glycerol 40%, BSA 0.05%
Recommended Method	Heat induced epitope retrieval with Tris-EDTA buffer (pH 9.0), primary antibody incubate at RT (18°C-25°C) for 30 minutes

*AREX continuously optimizes our products. Webpage content may not reflect the latest updates. For inquiries, please contact info@arexbio.com or your local distributor.

*Clone Number, Reactivity, Source/Host and Clonality can be found in the product name and Key Features section above.

DATASHEET**PTEN Rabbit Monoclonal Antibody(ARB537)**

CAT. NO. ARB6829

DATA

Immunohistochemical staining of human endometrial carcinoma tissue using PTEN Rabbit Monoclonal Antibody(ARB537)

STORAGE

Store at 4°C short term. For long term storage, store at -20°C, avoiding freeze/thaw cycles.

NOTE

For Research Use Only. Not for diagnostic, therapeutics, prophylactic or in vivo use.

More information: www.arexbio.com