

DATASHEET

PSAP Rabbit Monoclonal Antibody(ARB535)

CAT. NO. ARB6827

KEY FEATURES

Target	PSAP	Clonality	Monoclonal
Clone ID	ARB535	Applications	IHC
Source / Host	Rabbit	Dilution	1:100-1:200
Reactivity	Human	Storage	at-20°C

BACKGROUND

Prostatic Acid Phosphatase (PSAP or PAP) is a member of the histidine acid phosphatase family. It is a non-specific phosphatase that is capable of dephosphorylating tyrosine residues as well as phospholipids under mildly acidic conditions. Prostatic specific acid phosphatase (PSAP) is involved in prostate epithelial differentiation. It is highly expressed in prostate, primary and metastatic carcinoma of the prostate. This marker may be helpful in pinpointing the site of origin in cases of metastatic carcinoma of the prostate, and is considered a more sensitive marker than PSA.

APPLICATION

To ensure optimal assay performance, AREX recommends conducting reagent titration tailored to each testing system for optimal detection results.

IHC	1:100 - 1:200
-----	---------------

*Results are sample-specific. Please refer to your local assay conditions and test parameters for reference.

PRODUCT OVERVIEW

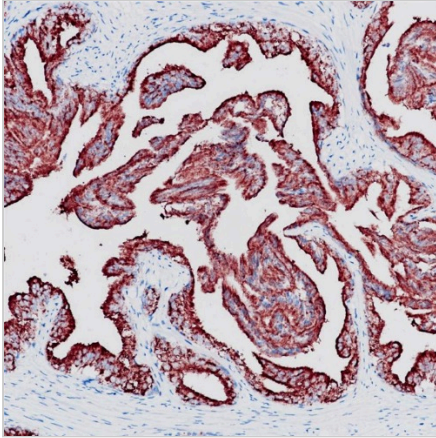
Predicted Molecular Wt	45kDa
Purity	ProA affinity purified IgG
Subcellular location	Cytoplasm
Swissprot ID	P15309
Immunogen	Synthetic peptide corresponding to PSAP residues within aa1-100 of PSAP was used as an immunogen
Storage Buffer	PBS 59%, Sodium azide 0.01%, Glycerol 40%, BSA 0.05%
Recommended method	Heat induced epitope retrieval with Tris-EDTA buffer (pH 9.0), primary antibody incubate at RT (18°C-25°C) for 30 minutes

*AREX continuously optimizes our products. Webpage content may not reflect the latest updates. For inquiries, please contact info@arexbio.com or your local distributor.

*Clone Number, Reactivity, Source/Host and Clonality can be found in the product name and Key Features section above.

DATASHEET**PSAP Rabbit Monoclonal Antibody(ARB535)**

CAT. NO. ARB6827

DATA

Immunohistochemical staining of human prostate carcinoma tissue using PSAP Rabbit Monoclonal Antibody(ARB535)

STORAGE

Store at 4°C short term. For long term storage, store at -20°C, avoiding freeze/thaw cycles.

NOTE

For Research Use Only. Not for diagnostic, therapeutics, prophylactic or in vivo use.

More information: www.arexbio.com