

## DATASHEET

# Procalcitonin Rabbit Monoclonal Antibody(ARB533)

CAT. NO. ARB6825

### KEY FEATURES

Target	Procalcitonin	Clonality	Monoclonal
Clone ID	ARB533	Applications	IHC
Source / Host	Rabbit	Dilution	1:100-1:200
Reactivity	Human	Storage	at-20°C

### BACKGROUND

Cancer/testis antigens (CTAs) are a family of more than 100 proteins whose normal expression is largely restricted to immune privileged germ cells of the testis, ovary, and trophoblast cells of the placenta. Although most normal somatic tissues are void of CTA expression, due to epigenetic silencing of gene expression, their expression is upregulated in a wide variety of human solid and liquid tumors. PRAME (preferentially expressed antigen in melanoma) is a cancer/testis antigen not normally expressed in any tissues except testis, but is upregulated in tumors. PRAME is expressed in melanoma cells and is recognized by cytolytic T - cells. It is also upregulated in other diseases, such as synovial sarcoma, NSCLC, and breast cancer, where it is thought to contribute to tumorigenesis and metastasis. PRAME is also highly expressed in liquid tumors such as AML and can be predictive of clinical outcome in some circumstances. PRAME and other cancer/testis antigens are currently being pursued as novel immunotherapy targets and diagnostic biomarkers.

### APPLICATION

To ensure optimal assay performance, AREX recommends conducting reagent titration tailored to each testing system for optimal detection results.

IHC	1:100 - 1:200
-----	---------------

\*Results are sample-specific. Please refer to your local assay conditions and test parameters for reference.

### PRODUCT OVERVIEW

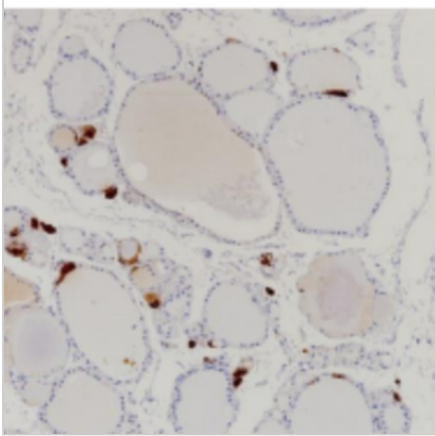
Predicted Molecular Wt	13kDa
Purity	ProA affinity purified IgG
Subcellular location	Cytoplasm
Swissprot ID	P01258
Immunogen	A synthetic peptide corresponding to the N - term of Procalcitonin was used as an immunogen
Storage Buffer	PBS 59%, Sodium azide 0.01%, Glycerol 40%, BSA 0.05%
Recommended Method	Heat induced epitope retrieval with Tris-EDTA buffer (pH 9.0), primary antibody incubate at RT (18°C - 25°C) for 30 minutes

\*AREX continuously optimizes our products. Webpage content may not reflect the latest updates. For inquiries, please contact [info@arexbio.com](mailto:info@arexbio.com) or your local distributor.

\*Clone Number, Reactivity, Source/Host and Clonality can be found in the product name and Key Features section above.

**DATASHEET****Procalcitonin Rabbit Monoclonal Antibody(ARB533)**

CAT. NO. ARB6825

**DATA**

Immunohistochemical staining of human thyroid tissue using Procalcitonin Rabbit Monoclonal Antibody(ARB533)

**STORAGE**

Store at 4°C short term. For long term storage, store at -20°C, avoiding freeze/thaw cycles.

**NOTE**

For Research Use Only. Not for diagnostic, therapeutics, prophylactic or in vivo use.

More information: [www.arexbio.com](http://www.arexbio.com)