

DATASHEET

Podoplanin Rabbit Monoclonal Antibody(ARB531)

CAT. NO. ARB6823

KEY FEATURES

Target	Podoplanin	Clonality	Monoclonal
Clone ID	ARB531	Applications	IHC
Source / Host	Rabbit	Dilution	1:100-1:200
Reactivity	Human	Storage	at-20°C

BACKGROUND

Podoplanin was first identified as a transmembrane glycoprotein in the podocytes of rat kidney. Podoplanin acts as receptor for selectins (which mediate inflammatory cell adhesion) and is involved in cell maturation and migration by filopodia formation (via the downregulation of the activities of small Rho family GTPases). Podoplanin is found in lymphatic endothelium (but not blood vessel endothelial cells), fibroblasts, osteocytes, follicular dendritic cells, smooth and striated muscle cells, myoepithelial cells, Cajal cells, basal cells in squamous epithelium (tonsil), gastric crypt cells, prostatic basal cells, immature Sertoli cells and foetal gonocytes (but not the corresponding cells of the adult testis), renal glomerular podocytes, mesothelium (particularly when reactive), subsets of lymphocytes, Schwann cells, glial and ependymal cells. Podoplanin is a very useful marker in the differentiation between malignant mesothelioma and adenocarcinoma, and the identification of seminoma/dysgerminoma/IGCN.

APPLICATION

To ensure optimal assay performance, AREX recommends conducting reagent titration tailored to each testing system for optimal detection results.

IHC	1:100 - 1:200
-----	---------------

*Results are sample-specific. Please refer to your local assay conditions and test parameters for reference.

PRODUCT OVERVIEW

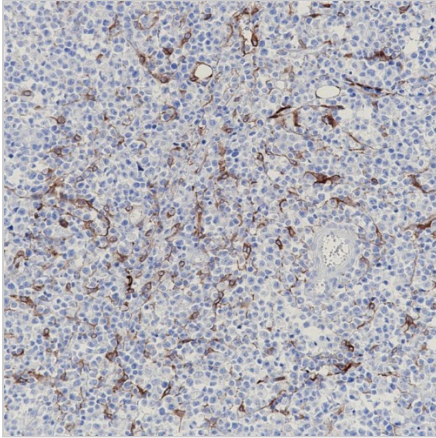
Predicted Molecular Wt	17kDa
Purity	ProA affinity purified IgG
Subcellular location	Membrane
Swissprot ID	Q86YL7
Immunogen	Synthetic peptide corresponding to residues within aa1-100 of Podoplanin was used as an immunogen
Storage Buffer	PBS 59%, Sodium azide 0.01%, Glycerol 40%, BSA 0.05%
Recommended method	Heat induced epitope retrieval with Tris-EDTA buffer (pH 9.0), primary antibody incubate at RT (18°C-25°C) for 30 minutes

*AREX continuously optimizes our products. Webpage content may not reflect the latest updates. For inquiries, please contact info@arexbio.com or your local distributor.

*Clone Number, Reactivity, Source/Host and Clonality can be found in the product name and Key Features section above.

DATASHEET**Podoplanin Rabbit Monoclonal Antibody(ARB531)**

CAT. NO. ARB6823

DATA

Immunohistochemical staining of human diffuse large B-cell lymphoma tissue using Podoplanin Rabbit Monoclonal Antibody(ARB531)

STORAGE

Store at 4°C short term. For long term storage, store at -20°C, avoiding freeze/thaw cycles.

NOTE

For Research Use Only. Not for diagnostic, therapeutics, prophylactic or in vivo use.

More information: www.arexbio.com