

DATASHEET

PLAP Mouse Monoclonal Antibody(ARB529)

CAT. NO. ARB6821

KEY FEATURES

Target	PLAP	Clonality	Monoclonal
Clone ID	ARB529	Applications	IHC
Source / Host	Mouse	Dilution	1:100-1:200
Reactivity	Human	Storage	at-20°C

BACKGROUND

Placental alkaline phosphatase (PLAP) is a membrane-associated sialoglycoprotein enzyme normally present at high concentration in syncytiotrophoblasts within the placenta during the third trimester of gestation. PLAP is expressed only in normal term placenta, endocervix and fallopian tube and also in ovarian and proximal gastrointestinal tumors. PLAP expression is rare in malignant germ cell tumors. PLAP is an important marker in the identification of germ cell tumours and intratubular germ cell neoplasia.

APPLICATION

To ensure optimal assay performance, AREX recommends conducting reagent titration tailored to each testing system for optimal detection results.

IHC	1:100 - 1:200
-----	---------------

*Results are sample-specific. Please refer to your local assay conditions and test parameters for reference.

PRODUCT OVERVIEW

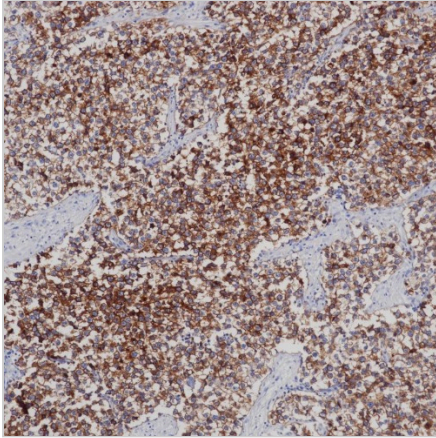
Predicted Molecular Wt	42kDa
Purity	ProA affinity purified IgG
Subcellular location	Nucleus
Swissprot ID	Q02548
Immunogen	Synthetic peptide corresponding to residues within aa300 to aa400 of PAX-5 was used as an immunogen
Storage Buffer	PBS 59%, Sodium azide 0.01%, Glycerol 40%, BSA 0.05%
Recommended method	Heat induced epitope retrieval with Tris-EDTA buffer (pH 9.0), primary antibody incubate at RT (18°C-25°C) for 30 minutes

*AREX continuously optimizes our products. Webpage content may not reflect the latest updates. For inquiries, please contact info@arexbio.com or your local distributor.

*Clone Number, Reactivity, Source/Host and Clonality can be found in the product name and Key Features section above.

DATASHEET**PLAP Mouse Monoclonal Antibody(ARB529)**

CAT. NO. ARB6821

DATA

Immunohistochemical staining of human seminoma tissue using PLAP Mouse Monoclonal Antibody(ARB529)

STORAGE

Store at 4°C short term. For long term storage, store at -20°C, avoiding freeze/thaw cycles.

NOTE

For Research Use Only. Not for diagnostic, therapeutics, prophylactic or in vivo use.

More information: www.arexbio.com