

DATASHEET

PAX-5 Rabbit Monoclonal Antibody(ARB522)

CAT. NO. ARB6814

KEY FEATURES

Target	PAX-5	Clonality	Monoclonal
Clone ID	ARB522	Applications	IHC
Source / Host	Rabbit	Dilution	1:100-1:200
Reactivity	Human	Storage	at-20°C

BACKGROUND

Pax genes are a family of developmental control genes that encode nuclear transcription factors and have been implicated in the control of mammalian development. PAX-5 is a marker for B-cells, including B-lymphoblastic neoplasms and maturation stage. It is found in most cases of mature and precursor B-cell non-Hodgkin lymphomas/leukemias. In approximately 97% of cases of classic Hodgkin lymphoma, Reed-Sternberg cells express PAX-5. The antibody is a useful tool for the identification of pro, pre, and mature B cells and for classification of lymphomas and subclassification of classic Hodgkin's lymphoma and anaplastic large cell lymphoma of the T and null-cell type.

APPLICATION

To ensure optimal assay performance, AREX recommends conducting reagent titration tailored to each testing system for optimal detection results.

IHC	1:100 - 1:200
-----	---------------

*Results are sample-specific. Please refer to your local assay conditions and test parameters for reference.

PRODUCT OVERVIEW

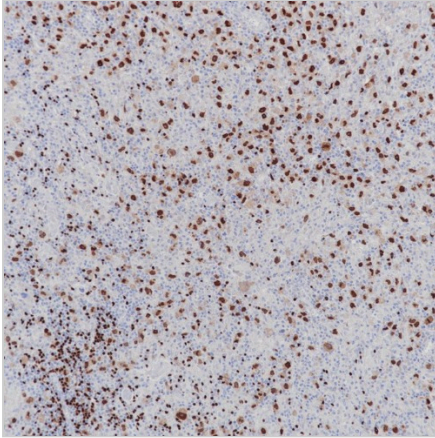
Predicted Molecular Wt	42kDa
Purity	ProA affinity purified IgG
Subcellular location	Nucleus
Swissprot ID	Q02548
Immunogen	Synthetic peptide corresponding to residues within aa300 to aa400 of PAX-5 was used as an immunogen
Storage Buffer	PBS 59%, Sodium azide 0.01%, Glycerol 40%, BSA 0.05%
Recommended method	Heat induced epitope retrieval with Tris-EDTA buffer (pH 9.0), primary antibody incubate at RT (18°C-25°C) for 30 minutes

*AREX continuously optimizes our products. Webpage content may not reflect the latest updates. For inquiries, please contact info@arexbio.com or your local distributor.

*Clone Number, Reactivity, Source/Host and Clonality can be found in the product name and Key Features section above.

DATASHEET**PAX-5 Rabbit Monoclonal Antibody(ARB522)**

CAT. NO. ARB6814

DATA

Immunohistochemical staining of human classical Hodgkin lymphoma tissue using PAX-5 Rabbit Monoclonal Antibody(ARB522)

STORAGE

Store at 4°C short term. For long term storage, store at -20°C, avoiding freeze/thaw cycles.

NOTE

For Research Use Only. Not for diagnostic, therapeutics, prophylactic or in vivo use.

More information: www.arexbio.com