

DATASHEET

PAX-2 Rabbit Monoclonal Antibody(ARB521)

CAT. NO. ARB6813

KEY FEATURES

Target	PAX-2	Clonality	Monoclonal
Clone ID	ARB521	Applications	IHC
Source / Host	Rabbit	Dilution	1:100-1:200
Reactivity	Human	Storage	at-20°C

BACKGROUND

PAX-2 is a member of the PAX family of transcription factors that, together with PAX-8, is involved in the regulation of the organogenesis of the kidney and the Müllerian system. Among the non-neoplastic tissue, PAX-2 was expressed in glomerular parietal epithelial cells, renal collecting duct cells, atrophic renal tubular cells, epithelial cells of ovarian surface, fallopian tube, endocervix, endometrium. Among the primary neoplasms, PAX-2 was mainly noted in renal cell carcinoma, carcinomas of Müllerian origin, nephrogenic adenomas. Recent investigations have indicated that PAX-2 could serve as a useful immunohistochemical marker that can assist in the diagnosis of epithelial tumors of the kidney, as well as some gynecologic (Müllerian) neoplasms.

APPLICATION

To ensure optimal assay performance, AREX recommends conducting reagent titration tailored to each testing system for optimal detection results.

IHC	1:100 - 1:200
-----	---------------

*Results are sample-specific. Please refer to your local assay conditions and test parameters for reference.

PRODUCT OVERVIEW

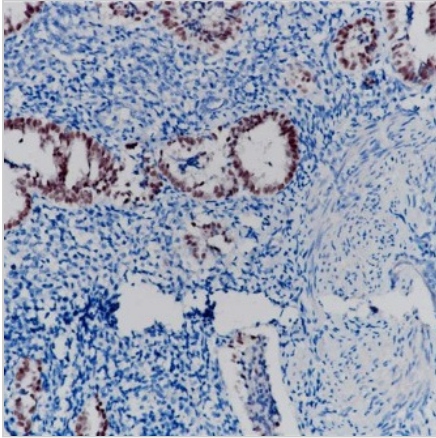
Predicted Molecular Wt	45kDa
Purity	ProA affinity purified IgG
Subcellular location	Nucleus
Swissprot ID	Q02966
Immunogen	Synthetic peptide corresponding to PAX-2 residues within aa300-400 of PAX-2 was used as an immunogen
Storage Buffer	PBS 59%, Sodium azide 0.01%, Glycerol 40%, BSA 0.05%
Recommended method	Heat induced epitope retrieval with Tris-EDTA buffer (pH 9.0), primary antibody incubate at RT (18°C-25°C) for 30 minutes

*AREX continuously optimizes our products. Webpage content may not reflect the latest updates. For inquiries, please contact info@arexbio.com or your local distributor.

*Clone Number, Reactivity, Source/Host and Clonality can be found in the product name and Key Features section above.

DATASHEET**PAX-2 Rabbit Monoclonal Antibody(ARB521)**

CAT. NO. ARB6813

DATA

Immunohistochemical staining of human uterus tissue using PAX-2 Rabbit Monoclonal Antibody(ARB521)

STORAGE

Store at 4°C short term. For long term storage, store at -20°C, avoiding freeze/thaw cycles.

NOTE

For Research Use Only. Not for diagnostic, therapeutics, prophylactic or in vivo use.

More information: www.arexbio.com