

DATASHEET

Parvalbumin alpha Rabbit Monoclonal Antibody(ARB520)

CAT. NO. ARB6812

KEY FEATURES

Target	Parvalbumin alpha	Clonality	Monoclonal
Clone ID	ARB520	Applications	IHC
Source / Host	Rabbit	Dilution	1:100-1:200
Reactivity	Human	Storage	at-20°C

BACKGROUND

Parvalbumin alpha is a low molecular weight calcium-bound albumin (usually 9-11 kDa), structurally related to calmodulin and troponin C, and is a stable protein involved in calcium signaling. Parvalbumin is involved in physiological processes such as cell cycle regulation, second messenger production, muscle contraction, microtubule organization and light conduction. Parvalbumin alpha is found in rapidly contracting muscles, where its levels are highest, as well as in the brain and some endocrine tissues. In normal kidneys, parvoprotein has been shown to be confined to distal tubule cells and collecting tubule cells (intercellular cells).

APPLICATION

To ensure optimal assay performance, AREX recommends conducting reagent titration tailored to each testing system for optimal detection results.

IHC	1:100 - 1:200
-----	---------------

*Results are sample-specific. Please refer to your local assay conditions and test parameters for reference.

PRODUCT OVERVIEW

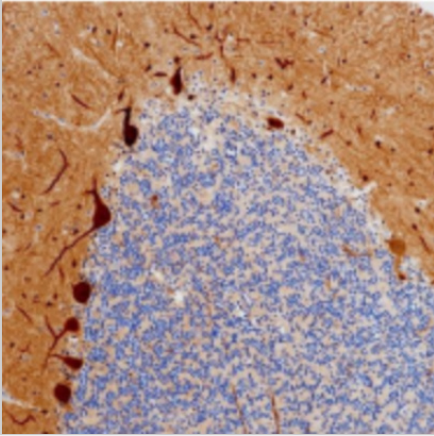
Predicted Molecular Wt	12kDa
Purity	ProA affinity purified IgG
Subcellular location	Nucleus & Cytoplasm
Swissprot ID	P20472
Immunogen	Full length recombinant protein of human Parvalbumin alpha was used as an immunogen
Storage Buffer	PBS 59%, Sodium azide 0.01%, Glycerol 40%, BSA 0.05%
Recommended Method	Heat induced epitope retrieval with Tris-EDTA buffer (pH 9.0), primary antibody incubate at RT (18°C-25°C) for 30 minutes

*AREX continuously optimizes our products. Webpage content may not reflect the latest updates. For inquiries, please contact info@arexbio.com or your local distributor.

*Clone Number, Reactivity, Source/Host and Clonality can be found in the product name and Key Features section above.

DATASHEET**Parvalbumin alpha Rabbit Monoclonal Antibody(ARB520)**

CAT. NO. ARB6812

DATA

Immunohistochemical staining of human renal chromophobe cell carcinoma tissue using Parvalbumin alpha Rabbit Monoclonal Antibody(ARB520)

STORAGE

Store at 4°C short term. For long term storage, store at -20°C, avoiding freeze/thaw cycles.

NOTE

For Research Use Only. Not for diagnostic, therapeutics, prophylactic or in vivo use.

More information: www.arexbio.com