

**DATASHEET**
**Pan-TRK Rabbit Monoclonal Antibody(ARB518)**
**CAT. NO. ARB6810**
**KEY FEATURES**

Target	Pan-TRK	Clonality	Monoclonal
Clone ID	ARB518	Applications	IHC
Source / Host	Rabbit	Dilution	1:100-1:200
Reactivity	Human	Storage	at-20°C

**BACKGROUND**

pan-TRK: Full name of NTRK: Neurotrophic Receptor Kinase. NTRK gene includes three subtypes: NTRK1, NTRK2 and NTRK3, which are located on different chromosomes. The proteins encoded by NTRK are called TRK proteins, and NTRK1, NTRK2 and NTRK3 encode TRKA, TRKB and TRKC respectively. TRK protein is a type of receptor tyrosine kinase that contains the extracellular ligand - binding region, the transmembrane region, and the intracellular tyrosine kinase region. When TRK binds to the ligand, dimerization occurs, and intracellular tyrosine kinase phosphorylation, signaling downstream. Three TRKs proteins are rarely expressed outside nervous tissues, but the activation of three TRK receptor structures by fusion of three genes is considered to be an oncogenic factor (oncogene) in the pancancerous species. NTRK gene fusion mutation is caused by the fusion of NTRK gene family members (NTRK1, NTRK2 and NTRK3) with another unrelated gene (usually housekeeping gene). The encoded TRK fusion protein is in a structurally activated state, which triggers a continuous signal cascade reaction, drives the malignant proliferation of cells, and causes cancer.

**APPLICATION**

To ensure optimal assay performance, AREX recommends conducting reagent titration tailored to each testing system for optimal detection results.

IHC	1:100 - 1:200
-----	---------------

\*Results are sample-specific. Please refer to your local assay conditions and test parameters for reference.

**PRODUCT OVERVIEW**

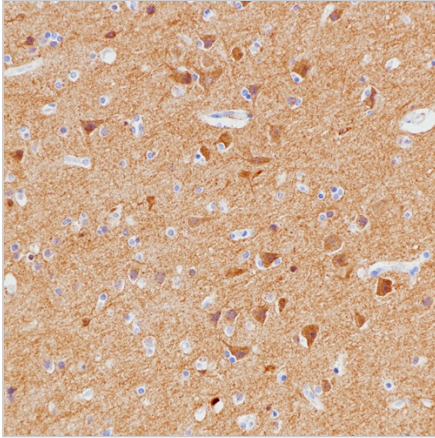
Predicted Molecular Wt	92kDa
Purity	ProA affinity purified IgG
Subcellular location	Cytoplasm
Swissprot ID	Q16620
Immunogen	Synthetic peptide corresponding to residues within aa350-450 of FOXP1 was used as an immunogen
Storage Buffer	PBS 59%, Sodium azide 0.01%, Glycerol 40%, BSA 0.05%
Recommended Method	Heat induced epitope retrieval with Tris-EDTA buffer (pH 9.0), primary antibody incubate at RT (18°C-25°C) for 30 minutes

\*AREX continuously optimizes our products. Webpage content may not reflect the latest updates. For inquiries, please contact [info@arexbio.com](mailto:info@arexbio.com) or your local distributor.

\*Clone Number, Reactivity, Source/Host and Clonality can be found in the product name and Key Features section above.

**DATASHEET****Pan-TRK Rabbit Monoclonal Antibody(ARB518)**

CAT. NO. ARB6810

**DATA**

Immunohistochemical staining of human brain tissue using Pan-TRK Rabbit Monoclonal Antibody(ARB518)

**STORAGE**

Store at 4°C short term. For long term storage, store at -20°C, avoiding freeze/thaw cycles.

**NOTE**

For Research Use Only. Not for diagnostic, therapeutics, prophylactic or in vivo use.

More information: [www.arexbio.com](http://www.arexbio.com)