

DATASHEET

pan-Cadherin Rabbit Monoclonal Antibody(ARB517)

CAT. NO. ARB6809

KEY FEATURES

Target	pan-Cadherin	Clonality	Monoclonal
Clone ID	ARB517	Applications	IHC
Source / Host	Rabbit	Dilution	1:100-1:200
Reactivity	Human	Storage	at-20°C

BACKGROUND

Cadherins are a superfamily of transmembrane glycoproteins that contain cadherin repeats of approximately 100 residues in their extracellular domain. Cadherins mediate calcium-dependent cell-cell adhesion and play critical roles in normal tissue development. The classic cadherin subfamily includes N-, P-, R- and E-cadherins, as well as about ten other members that are found in adherens junctions, a cellular structure near the apical surface of polarized epithelial cells. Cadherins are expressed in a number of normal tissues, including the stomach, esophagus and kidney. Cadherins are expressed in various types of cancer tissues, including the breast cancer, cervical carcinoma and gastric cancer. Investigators consider that E-cadherin is an active suppressor of invasion and growth of many epithelial cancers. Research studies indicate that cancer cells have upregulated expression of N-cadherin and downregulated expression of E-cadherin. This change in cadherin expression is called the "cadherin switch". N-cadherin cooperates with the FGF receptor, leading to overexpression of MMP-9 and cellular invasion. Investigators have also demonstrated that expression of P-cadherin, which is normally present in epithelial cells, is also altered in ovarian and other human cancers

APPLICATION

To ensure optimal assay performance, AREX recommends conducting reagent titration tailored to each testing system for optimal detection results.

IHC	1:100 - 1:200
-----	---------------

*Results are sample-specific. Please refer to your local assay conditions and test parameters for reference.

PRODUCT OVERVIEW

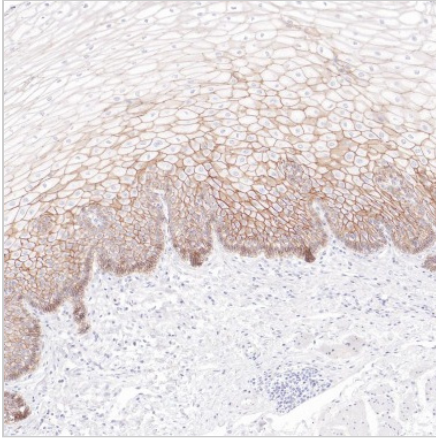
Predicted Molecular Wt	97kDa
Purity	ProA affinity purified IgG
Subcellular location	Membrane and Cytoplasmic
Swissprot ID	P12830/P19022/P22223/P55283
Immunogen	Synthetic peptide.
Storage Buffer	PBS 59%, Sodium azide 0.01%, Glycerol 40%, BSA 0.05%
Recommended Method	Heat induced epitope retrieval with Tris-EDTA buffer (pH 9.0), primary antibody incubate at RT (18°C-25°C) for 30 minutes

*AREX continuously optimizes our products. Webpage content may not reflect the latest updates. For inquiries, please contact info@arexbio.com or your local distributor.

*Clone Number, Reactivity, Source/Host and Clonality can be found in the product name and Key Features section above.

DATASHEET**pan-Cadherin Rabbit Monoclonal Antibody(ARB517)**

CAT. NO. ARB6809

DATA

Immunohistochemical staining of human esophagus tissue using pan-Cadherin Rabbit Monoclonal Antibody(ARB517)

STORAGE

Store at 4°C short term. For long term storage, store at -20°C, avoiding freeze/thaw cycles.

NOTE

For Research Use Only. Not for diagnostic, therapeutics, prophylactic or in vivo use.

More information: www.arexbio.com