

DATASHEET

p21 Rabbit Monoclonal Antibody(ARB516)

CAT. NO. ARB6808

KEY FEATURES

Target	p21	Clonality	Monoclonal
Clone ID	ARB516	Applications	IHC
Source / Host	Rabbit	Dilution	1:100-1:200
Reactivity	Human	Storage	at-20°C

BACKGROUND

p21, also known as cyclin-dependent kinase inhibitor 1 or CDK-interacting protein 1, is a protein that in humans is encoded by the CDKN1A gene located on chromosome 6 (6p21.2). The p21 protein binds to and inhibits the activity of cyclin-CDK2 or -CDK4 complexes, and thus functions as a regulator of cell cycle progression at G1. p21 is expressed in all adult human tissues. In tumors, the expression of p21 has been studied by immunohistochemical methods in a wide range of human tumors, such as gastric carcinoma, non-small cell lung carcinoma, and thyroid carcinoma. The expression of p21 is associated with favorable prognosis in various tumors.

APPLICATION

To ensure optimal assay performance, AREX recommends conducting reagent titration tailored to each testing system for optimal detection results.

IHC	1:100 - 1:200
-----	---------------

*Results are sample-specific. Please refer to your local assay conditions and test parameters for reference.

PRODUCT OVERVIEW

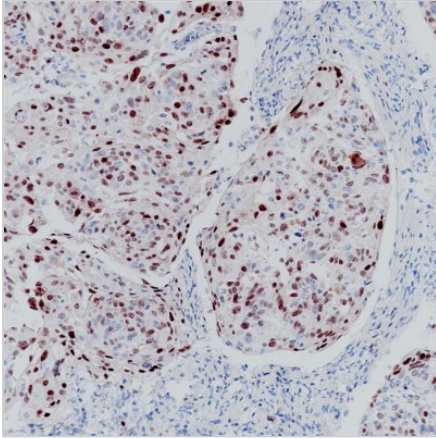
Predicted Molecular Wt	18kDa
Purity	ProA affinity purified IgG
Subcellular location	Nucleus
Swissprot ID	P38936
Immunogen	Synthetic peptide corresponding to p21 residues within aa1-100 of p21 was used as an immunogen
Storage Buffer	PBS 59%, Sodium azide 0.01%, Glycerol 40%, BSA 0.05%
Recommended method	Heat induced epitope retrieval with Tris-EDTA buffer (pH 9.0), primary antibody incubate at RT (18°C-25°C) for 30 minutes

*AREX continuously optimizes our products. Webpage content may not reflect the latest updates. For inquiries, please contact info@arexbio.com or your local distributor.

*Clone Number, Reactivity, Source/Host and Clonality can be found in the product name and Key Features section above.

DATASHEET**p21 Rabbit Monoclonal Antibody(ARB516)**

CAT. NO. ARB6808

DATA

Immunohistochemical staining of human cervical carcinoma tissue using p21 Rabbit Monoclonal Antibody(ARB516)

STORAGE

Store at 4°C short term. For long term storage, store at -20°C, avoiding freeze/thaw cycles.

NOTE

For Research Use Only. Not for diagnostic, therapeutics, prophylactic or in vivo use.

More information: www.arexbio.com