

DATASHEET

p16 Mouse Monoclonal Antibody(ARB515)

CAT. NO. ARB6807

KEY FEATURES

Target	p16	Clonality	Monoclonal
Clone ID	ARB515	Applications	IHC
Source / Host	Mouse	Dilution	1:100-1:200
Reactivity	Human	Storage	at-20°C

BACKGROUND

The progression of cells through the cell cycle is regulated by a family of protein kinases known as cyclin-dependent kinases (Cdks). The sequential activation of individual members of this family and their consequent phosphorylation of critical substrates promotes orderly progression through the cell cycle. Moreover, the gene encoding p16 INK4A exhibits a high frequency of homozygous deletions and point mutations in established human tumor cell lines. p16 INK4A expression is commonly inhibited by lack of stress and is thought to promote cellular senescence. And p16 INK4A expression is a commonly used cellular marker of senescence. p16 INK4A protein expression is normally altered in human cancer cells, and its high expression can be used as a predictive biomarker in cervical cancer cells.

APPLICATION

To ensure optimal assay performance, AREX recommends conducting reagent titration tailored to each testing system for optimal detection results.

IHC	1:100 - 1:200
-----	---------------

*Results are sample-specific. Please refer to your local assay conditions and test parameters for reference.

PRODUCT OVERVIEW

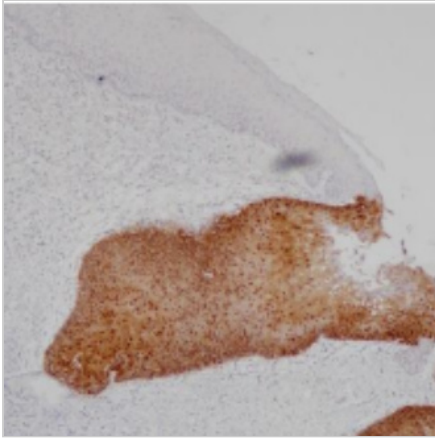
Predicted Molecular Wt	17kDa
Purity	ProG affinity purified IgG
Subcellular location	Nucleus
Swissprot ID	P42771
Immunogen	Full length recombinant p16 INK4A of human origin was used as an immunogen
Storage Buffer	PBS 59%, Sodium azide 0.01%, Glycerol 40%, BSA 0.05%
Recommended Method	Heat induced epitope retrieval with Tris-EDTA buffer (pH 9.0), primary antibody incubate at RT (18°C-25°C) for 30 minutes

*AREX continuously optimizes our products. Webpage content may not reflect the latest updates. For inquiries, please contact info@arexbio.com or your local distributor.

*Clone Number, Reactivity, Source/Host and Clonality can be found in the product name and Key Features section above.

DATASHEET**p16 Mouse Monoclonal Antibody(ARB515)**

CAT. NO. ARB6807

DATA

Immunohistochemical staining of human cervical intraepithelial neoplasia tissue using p16 Mouse Monoclonal Antibody(ARB515)

STORAGE

Store at 4°C short term. For long term storage, store at -20°C, avoiding freeze/thaw cycles.

NOTE

For Research Use Only. Not for diagnostic, therapeutics, prophylactic or in vivo use.

More information: www.arexbio.com