

**DATASHEET**

**OCT3/4 Rabbit Monoclonal Antibody(ARB510)**

CAT. NO. ARB6802

**KEY FEATURES**

Target	OCT3/4	Clone ID	ARB510
Source / Host	Rabbit	Reactivity	Human
Applications	IHC	Dilution	1:100-1:200
Clonality	Monoclonal	Storage	at-20°C

**BACKGROUND**

OCT-4, also known as OTF3 or POU5F1, is a member of the POU family of transcription factors, involved in the regulation of pluripotency during normal development and is detectable in embryonic stem and germ cells. It can specifically bind to the octamer motif (5'-ATTTTCAT-3'), and it is critical for the self-renewal of embryonic stem cells. OCT-4 is a key regulator of self-renewal in embryonic stem cells; its expression is potentially correlated with tumorigenesis and can affect some aspects of tumor behavior such as tumor recurrence or resistance to therapies. OCT-4 is a sensitive and specific marker for germ cell tumors. It is consistently detected in carcinoma in situ/gonadoblastoma, seminomas, germinoma, dysgerminoma, and embryonal carcinoma but not in the differentiated components of nonseminomas. An antibody to OCT-4 is useful in the identification of primary as well as metastatic germ cell tumors.

**APPLICATION**

To ensure optimal assay performance, AREX recommends conducting reagent titration tailored to each testing system for optimal detection results.

Application	Dilution Ratio
IHC	1:100 - 1:200

\*Results are sample-specific. Please refer to your local assay conditions and test parameters for reference.

**OVERVIEW**

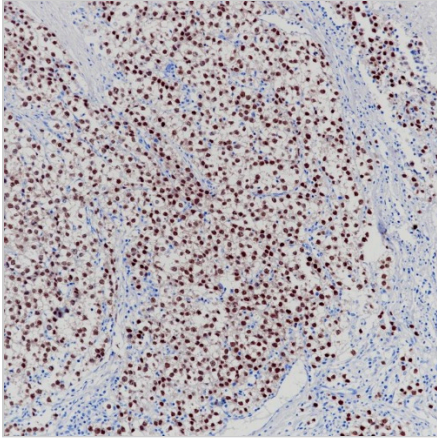
Predicted Molecular Wt	39kDa
Purity	ProA affinity purified IgG
Subcellular location	Nucleus
Swissprot ID	Q01860
Immunogen	Synthetic peptide.
Storage Buffer	PBS 59%, Sodium azide 0.01%, Glycerol 40%, BSA 0.05%
Recommended Method	Heat induced epitope retrieval with Tris-EDTA buffer (pH 9.0), primary antibody incubate at RT (18°C-25°C) for 30 minutes
Alternative Names	OCT3, POU5F1
Gene Symbol	POU5F1
Entrez Gene	5460

\*AREX continuously optimizes our products. Webpage content may not reflect the latest updates. For inquiries, please contact [info@arexbio.com](mailto:info@arexbio.com) or your local distributor.

\*Clone Number, Reactivity, Source/Host and Clonality can be found in the product name and Key Features section above.

**DATASHEET****OCT3/4 Rabbit Monoclonal Antibody(ARB510)**

CAT. NO. ARB6802

**DATA**

Immunohistochemical staining of human seminoma tissue using OCT3/4 Rabbit Monoclonal Antibody(ARB510).

**STORAGE**

Store at 4°C short term. For long term storage, store at -20°C, avoiding freeze/thaw cycles.

**NOTE**

For Research Use Only. Not for diagnostic, therapeutics, prophylactic or in vivo use.

More information: [www.arexbio.com](http://www.arexbio.com)