

## DATASHEET

# NSE Mouse Monoclonal Antibody(ARB509)

CAT. NO. ARB6801

### KEY FEATURES

Target	NSE	Clonality	Monoclonal
Clone ID	ARB509	Applications	IHC
Source / Host	Mouse	Dilution	1:100-1:200
Reactivity	Human	Storage	at-20°C

### BACKGROUND

NSE is an intracytoplasmic protein, and enolase is a dimer in mammals. It has three subunits: 1, 2, and 3, which are mainly distributed in central nerve, peripheral nerve, neuroendocrine cells and tumor cells. This antibody can specifically recognize 47kDa of NSE, and can be used for the auxiliary diagnosis of neuroendocrine tumors. Due to the poor specificity of the antibody, some normal smooth muscle, myoepithelial cells, renal tubular cells, lymphocytes can also express NSE. Therefore, this antibody is not used as a single diagnostic marker, and should be applied in combination with other indicators to improve its diagnostic accuracy.

### APPLICATION

To ensure optimal assay performance, AREX recommends conducting reagent titration tailored to each testing system for optimal detection results.

IHC	1:100 - 1:200
-----	---------------

\*Results are sample-specific. Please refer to your local assay conditions and test parameters for reference.

### PRODUCT OVERVIEW

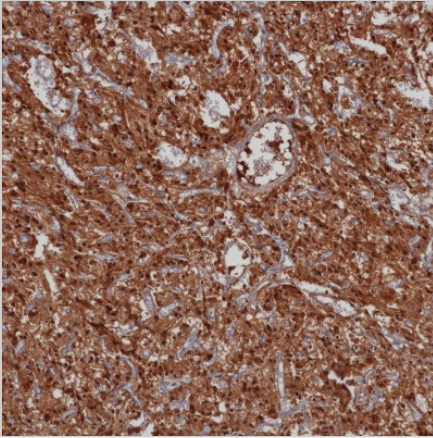
Predicted Molecular Wt	47kDa
Purity	ProG affinity purified IgG
Subcellular location	Cytoplasm
Swissprot ID	P09104
Immunogen	Synthetic peptide within Human NSE aa 416-433.
Storage Buffer	PBS 59%, Sodium azide 0.01%, Glycerol 40%, BSA 0.05%
Recommended method	Heat induced epitope retrieval with Tris-EDTA buffer (pH 9.0), primary antibody incubate at RT (18°C-25°C) for 30 minutes

\*AREX continuously optimizes our products. Webpage content may not reflect the latest updates. For inquiries, please contact [info@arexbio.com](mailto:info@arexbio.com) or your local distributor.

\*Clone Number, Reactivity, Source/Host and Clonality can be found in the product name and Key Features section above.

**DATASHEET****NSE Mouse Monoclonal Antibody(ARB509)**

CAT. NO. ARB6801

**DATA**

Immunohistochemical staining of human pheochromocytoma tissue using NSE Mouse Monoclonal Antibody(ARB509)

**STORAGE**

Store at 4°C short term. For long term storage, store at -20°C, avoiding freeze/thaw cycles.

**NOTE**

For Research Use Only. Not for diagnostic, therapeutics, prophylactic or in vivo use.

More information: [www.arexbio.com](http://www.arexbio.com)