

## DATASHEET

# NKX2.2 Rabbit Monoclonal Antibody(ARB506)

CAT. NO. ARB6798

### KEY FEATURES

Target	NKX2.2	Clonality	Monoclonal
Clone ID	ARB506	Applications	IHC
Source / Host	Rabbit	Dilution	1:100-1:200
Reactivity	Human	Storage	at-20°C

### BACKGROUND

NKX2.2 is a homeodomain transcription factor that plays a role in neuroendocrine and glial differentiation. NKX2.2 is expressed in normal tissues, including the cerebral cortex, pancreas and stomach. Highly expressed in Ewing's sarcoma. As one of many small round blue cell tumors, Ewing's sarcoma can be difficult to diagnose due to the characteristic undifferentiated morphology. NKX2.2 has proven its utility as a sensitive maker for distinguishing Ewing's sarcoma from other round blue cell tumors when used in a panel.

### APPLICATION

To ensure optimal assay performance, AREX recommends conducting reagent titration tailored to each testing system for optimal detection results.

IHC	1:100 - 1:200
-----	---------------

\*Results are sample-specific. Please refer to your local assay conditions and test parameters for reference.

### PRODUCT OVERVIEW

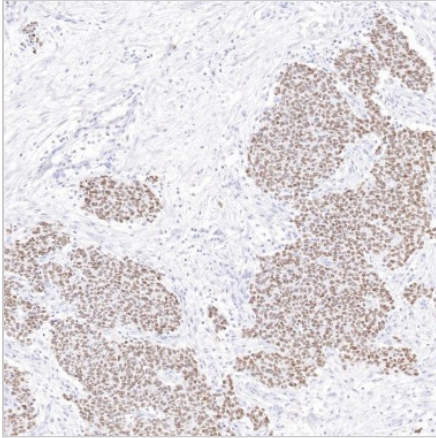
Predicted Molecular Wt	30kDa
Purity	ProA affinity purified IgG
Subcellular location	Nucleus
Swissprot ID	O95096
Storage Buffer	PBS 59%, Sodium azide 0.01%, Glycerol 40%, BSA 0.05%
Recommended Method	Heat induced epitope retrieval with Tris-EDTA buffer (pH 9.0), primary antibody incubate at RT (18°C - 25°C) for 30 minutes

\*AREX continuously optimizes our products. Webpage content may not reflect the latest updates. For inquiries, please contact [info@arexbio.com](mailto:info@arexbio.com) or your local distributor.

\*Clone Number, Reactivity, Source/Host and Clonality can be found in the product name and Key Features section above.

**DATASHEET****NKX2.2 Rabbit Monoclonal Antibody(ARB506)**

CAT. NO. ARB6798

**DATA**

Immunohistochemical staining of human Ewing sarcoma tissue sections using NKX2.2 Rabbit Monoclonal Antibody (ARB506).

**STORAGE**

Store at 4°C short term. For long term storage, store at -20°C, avoiding freeze/thaw cycles.

**NOTE**

For Research Use Only. Not for diagnostic, therapeutics, prophylactic or in vivo use.

More information: [www.arexbio.com](http://www.arexbio.com)