

DATASHEET

Myogenin Rabbit Monoclonal Antibody(ARB501)

CAT. NO. ARB6793

KEY FEATURES

Target	Myogenin	Clonality	Monoclonal
Clone ID	ARB501	Applications	IHC
Source / Host	Rabbit	Dilution	1:100-1:200
Reactivity	Human	Storage	at-20°C

BACKGROUND

Myogenin belongs to a family of regulatory proteins essential for muscle development. Myogenin is expressed on cells of skeletal muscle origin, and appears to be inversely related to the degree of cellular differentiation. The antibody is a useful aid for classification of rhabdomyosarcomas and Wilms' tumors. No reactivity with Ewing's sarcoma/peripheral primitive neuroectodermal tumor, neuroblastoma, or adult skeletal muscle has been observed.

APPLICATION

To ensure optimal assay performance, AREX recommends conducting reagent titration tailored to each testing system for optimal detection results.

IHC	1:100 - 1:200
-----	---------------

*Results are sample-specific. Please refer to your local assay conditions and test parameters for reference.

PRODUCT OVERVIEW

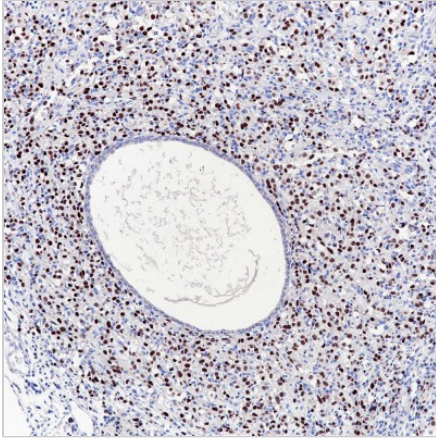
Predicted Molecular Wt	32kDa
Purity	ProA affinity purified IgG
Subcellular location	Nucleus
Swissprot ID	P51573
Immunogen	Synthetic peptide corresponding to residues within aa100 to aa200 of Myogenin was used as an immunogen
Storage Buffer	PBS 59%, Sodium azide 0.01%, Glycerol 40%, BSA 0.05%
Recommended method	Heat induced epitope retrieval with Tris-EDTA buffer (pH 9.0), primary antibody incubate at RT (18°C-25°C) for 30 minutes

*AREX continuously optimizes our products. Webpage content may not reflect the latest updates. For inquiries, please contact info@arexbio.com or your local distributor.

*Clone Number, Reactivity, Source/Host and Clonality can be found in the product name and Key Features section above.

DATASHEET**Myogenin Rabbit Monoclonal Antibody(ARB501)**

CAT. NO. ARB6793

DATA

Immunohistochemical staining of human embryonal rhabdomyosarcoma tissue using Myogenin Rabbit Monoclonal Antibody(ARB501)

STORAGE

Store at 4°C short term. For long term storage, store at -20°C, avoiding freeze/thaw cycles.

NOTE

For Research Use Only. Not for diagnostic, therapeutics, prophylactic or in vivo use.

More information: www.arexbio.com