

DATASHEET

Myelin Basic Protein Rabbit Monoclonal Antibody(ARB999)

CAT. NO. ARB6791

KEY FEATURES

Target	Myelin Basic Protein	Clonality	Monoclonal
Clone ID	ARB999	Applications	IHC
Source / Host	Rabbit	Dilution	1:100-1:200
Reactivity	Human	Storage	at-20°C

BACKGROUND

Myelin basic protein (MBP) is the second most abundant protein in central nervous system (CNS) myelin: it comprises 30% of the total protein and about 10% of the dry weight of myelin. It is the only structural protein found so far to be essential for formation of CNS myelin, and has been called the 'executive molecule of myelin'. MBP can interact with a number of polyanionic proteins including actin, tubulin, calmodulin, and clathrin, and negatively charged lipids, and acquires structure on binding to them. It may act as a membrane - actin - binding protein, which might allow it to participate in transmission of extracellular signals to the cytoskeleton in oligodendrocytes and tight junctions in myelin. MBP may be applicable as a marker for oligodendrogliomas.

APPLICATION

To ensure optimal assay performance, AREX recommends conducting reagent titration tailored to each testing system for optimal detection results.

IHC	1:100 - 1:200
-----	---------------

*Results are sample-specific. Please refer to your local assay conditions and test parameters for reference.

PRODUCT OVERVIEW

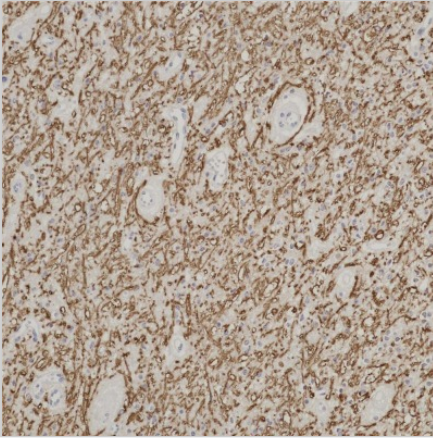
Predicted Molecular Wt	14-22kDa
Purity	ProA affinity purified IgG
Subcellular location	Cytoplasm and Membrane
Swissprot ID	P02686
Immunogen	Synthetic peptide corresponding to residues within aa150-250 of Myelin Basic Protein was used as an immunogen
Storage Buffer	PBS 59%, Sodium azide 0.01%, Glycerol 40%, BSA 0.05%
Recommended method	Heat induced epitope retrieval with Tris-EDTA buffer (pH 9.0), primary antibody incubate at RT (18°C-25°C) for 30 minutes

*AREX continuously optimizes our products. Webpage content may not reflect the latest updates. For inquiries, please contact info@arexbio.com or your local distributor.

*Clone Number, Reactivity, Source/Host and Clonality can be found in the product name and Key Features section above.

DATASHEET**Myelin Basic Protein Rabbit Monoclonal Antibody(ARB999)**

CAT. NO. ARB6791

DATA

Immunohistochemical staining of human glioma tissue using Myelin Basic Protein Rabbit Monoclonal Antibody (ARB999)

STORAGE

Store at 4°C short term. For long term storage, store at -20°C, avoiding freeze/thaw cycles.

NOTE

For Research Use Only. Not for diagnostic, therapeutics, prophylactic or in vivo use.

More information: www.arexbio.com