

## DATASHEET

# MHC I Rabbit Monoclonal Antibody(ARB992)

CAT. NO. ARB6784

### KEY FEATURES

|               |        |              |             |
|---------------|--------|--------------|-------------|
| Target        | MHC I  | Clonality    | Monoclonal  |
| Clone ID      | ARB992 | Applications | IHC         |
| Source / Host | Rabbit | Dilution     | 1:100-1:200 |
| Reactivity    | Human  | Storage      | at-20°C     |

### BACKGROUND

Major Histocompatibility Complex (MHC) is a genetic region on chromosomes composed of tightly linked highly polymorphic gene loci that encode cell surface specific proteins, depending on the structure and function of genes and coding products. We divide MHC into class I, class II and class III gene regions. Endogenous antigen presentation is presented by the major histocompatibility complex I (MHC I) pathway. Intracytoplasmic proteins are decomposed into peptides during protease degradation, which in turn are delivered by HSP41 and HSP90 proteins to TAP on the membrane. MHC I is widely distributed on the surface of almost all nucleated cells, including spleen, lymph nodes and thymus lymphocytes in normal tissues. It is also expressed in skin, lung, kidney, liver and heart tissues. It is also widely expressed in tumor tissues. MHC I molecular typing is related to the matching of organ transplantation and bone marrow transplantation, as well as a variety of autoimmune diseases.

### APPLICATION

To ensure optimal assay performance, AREX recommends conducting reagent titration tailored to each testing system for optimal detection results.

|     |               |
|-----|---------------|
| IHC | 1:100 - 1:200 |
|-----|---------------|

\*Results are sample-specific. Please refer to your local assay conditions and test parameters for reference.

### PRODUCT OVERVIEW

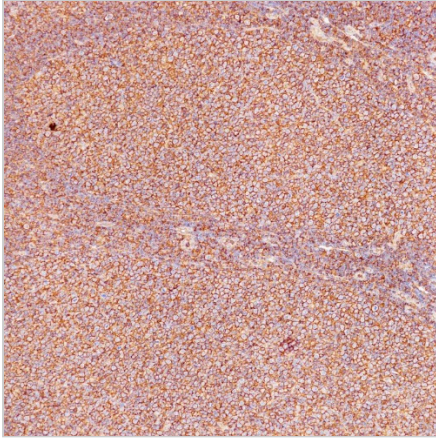
|                        |   |
|------------------------|---|
| Predicted Molecular Wt | 40/41kDa  |
| Purity                 | ProA affinity purified IgG  |
| Subcellular location   | Membrane  |
| Swissprot ID           | P04439/P01889/P10321  |
| Immunogen              | Recombinant protein fragment of HLA-A was used as an immunogen.   |
| Storage Buffer         | PBS 59%, Sodium azide 0.01%, Glycerol 40%, BSA 0.05%  |
| Recommended Method     | Heat induced epitope retrieval with Tris-EDTA buffer (pH 9.0), primary antibody incubate at RT (18°C-25°C) for 30 minutes |

\*AREX continuously optimizes our products. Webpage content may not reflect the latest updates. For inquiries, please contact [info@arexbio.com](mailto:info@arexbio.com) or your local distributor.

\*Clone Number, Reactivity, Source/Host and Clonality can be found in the product name and Key Features section above.

**DATASHEET****MHC I Rabbit Monoclonal Antibody(ARB992)**

CAT. NO. ARB6784

**DATA**

Immunohistochemical staining of human tonsil tissue using MHC I Rabbit Monoclonal Antibody(ARB992)

**STORAGE**

Store at 4°C short term. For long term storage, store at -20°C, avoiding freeze/thaw cycles.

**NOTE**

For Research Use Only. Not for diagnostic, therapeutics, prophylactic or in vivo use.

More information: [www.arexbio.com](http://www.arexbio.com)