

DATASHEET

MHC II (DR α chain) Rabbit Monoclonal Antibody(ARB991)

CAT. NO. ARB6783

KEY FEATURES

Target	MHC II (DR α chain)	Clonality	Monoclonal
Clone ID	ARB991	Applications	IHC
Source / Host	Rabbit	Dilution	1:100-1:200
Reactivity	Human	Storage	at-20°C

BACKGROUND

Major histocompatibility complex class II (MHC class II) molecules are heterodimeric, transmembrane glycoproteins expressed on the surface of antigen-presenting cells such as macrophages, dendritic cells, and B cells. Expression can also be induced on other cell types through interferon-γ signaling. Prior to being displayed on the cell membrane, MHC class II molecules are loaded with exogenous peptide antigens approximately 15-24 amino acids in length that were derived from endocytosed extracellular proteins digested in the lysosome. Antigen-presentation through MHC class II is required for T cell activation during the immune response to extracellular pathogens. In humans, the MHC class II protein complex is encoded by the human leukocyte antigen gene complex (HLA).

APPLICATION

To ensure optimal assay performance, AREX recommends conducting reagent titration tailored to each testing system for optimal detection results.

IHC	1:100 - 1:200
-----	---------------

*Results are sample-specific. Please refer to your local assay conditions and test parameters for reference.

PRODUCT OVERVIEW

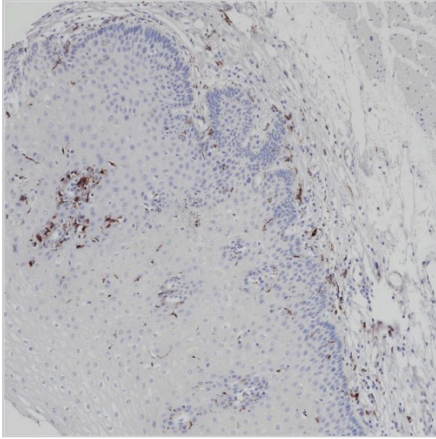
Predicted Molecular Wt	29kDa
Purity	ProA affinity purified IgG
Subcellular location	Membrane
Swissprot ID	P01903
Immunogen	Synthetic peptide near C-terminal residues in Human MHC II (DR α chain) was used as an immunogen
Storage Buffer	PBS 59%, Sodium azide 0.01%, Glycerol 40%, BSA 0.05%
Recommended method	Heat induced epitope retrieval with Tris-EDTA buffer (pH 9.0), primary antibody incubate at RT (18°C-25°C) for 30 minutes

*AREX continuously optimizes our products. Webpage content may not reflect the latest updates. For inquiries, please contact info@arexbio.com or your local distributor.

*Clone Number, Reactivity, Source/Host and Clonality can be found in the product name and Key Features section above.

DATASHEET**MHC II (DR α chain) Rabbit Monoclonal Antibody(ARB991)**

CAT. NO. ARB6783

DATA

Immunohistochemical staining of human esophagus tissue using MHC II (DR α chain) Rabbit Monoclonal Antibody(ARB991)

STORAGE

Store at 4°C short term. For long term storage, store at -20°C, avoiding freeze/thaw cycles.

NOTE

For Research Use Only. Not for diagnostic, therapeutics, prophylactic or in vivo use.

More information: www.arexbio.com