

DATASHEET

Mammaglobin Rabbit Monoclonal Antibody(ARB983)

CAT. NO. ARB6775

KEY FEATURES

Target	Mammaglobin	Clonality	Monoclonal
Clone ID	ARB983	Applications	IHC
Source / Host	Rabbit	Dilution	1:100-1:200
Reactivity	Human	Storage	at-20°C

BACKGROUND

Mammaglobin, 10 kDa, is a cytoplasmic protein, a mammary-specific member of the uteroglobin family. It is related to a family of epithelial secretory proteins that includes prostatetin and Clara cell protein. Mammaglobin occurs in about 80% of breast carcinomas. The extend is generally larger than that of GCDFP-15. Up to 15% of nonbreast carcinomas (such as stomach, lung, colon, hepatobiliary, thyroid, ovarian, and urothelial carcinomas) have been reported positive, usually only focally. Mammaglobin is a sensitive and fairly specific marker for breast carcinoma. The panel should also include Gross cystic disease fluid protein-15 and Estrogen receptor alpha.

APPLICATION

To ensure optimal assay performance, AREX recommends conducting reagent titration tailored to each testing system for optimal detection results.

IHC	1:100 - 1:200
-----	---------------

*Results are sample-specific. Please refer to your local assay conditions and test parameters for reference.

PRODUCT OVERVIEW

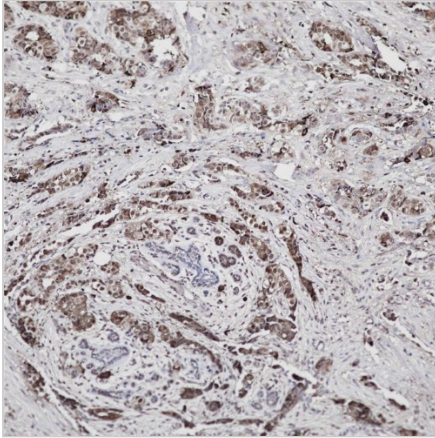
Predicted Molecular Wt	23kDa
Purity	ProA affinity purified IgG
Subcellular location	Cytoplasm
Swissprot ID	POCG04
Immunogen	Synthetic peptide corresponding to residues within N-terminus of immunoglobulin lambda constant 1 was used as an immunogen
Storage Buffer	PBS 59%, Sodium azide 0.01%, Glycerol 40%, BSA 0.05%
Recommended method	Heat induced epitope retrieval with Tris-EDTA buffer (pH 9.0), primary antibody incubate at RT (18°C-25°C) for 30 minutes

*AREX continuously optimizes our products. Webpage content may not reflect the latest updates. For inquiries, please contact info@arexbio.com or your local distributor.

*Clone Number, Reactivity, Source/Host and Clonality can be found in the product name and Key Features section above.

DATASHEET**Mammaglobin Rabbit Monoclonal Antibody(ARB983)**

CAT. NO. ARB6775

DATA

Immunohistochemical staining of human breast carcinoma tissue using Mammaglobin Rabbit Monoclonal Antibody(ARB983)

STORAGE

Store at 4°C short term. For long term storage, store at -20°C, avoiding freeze/thaw cycles.

NOTE

For Research Use Only. Not for diagnostic, therapeutics, prophylactic or in vivo use.

More information: www.arexbio.com