

DATASHEET

Lambda Light Chains Rabbit Monoclonal Antibody(ARB981)

CAT. NO. ARB6773

KEY FEATURES

Target	Lambda Light Chains	Clonality	Monoclonal
Clone ID	ARB981	Applications	IHC
Source / Host	Rabbit	Dilution	1:100-1:200
Reactivity	Human	Storage	at-20°C

BACKGROUND

Lambda light chains are polypeptide chains located in the cell membrane and cytoplasmic regions of normal B cells and plasma cells. The combination of lambda light chains and heavy chains forms immunoglobulin molecules. There are two classes of light chains found in immunoglobulins, kappa light chains and lambda light chains. Light chain production by lymphoid cells is genetically restricted such that the immunoglobulin molecules produced by an individual cell will only contain a single light chain class. The normal human kappa/lambda ratio is approximately 2:1. The presence of clear cut light chain restriction with a kappa/lambda ratio more than 10:1 is consistent with a malignant proliferation. This antibody recognizes lambda light chains of human immunoglobulins, which may be useful in the identification of leukemias, plasmacytomas, and certain non-Hodgkin's lymphomas. The most common feature of these malignancies is the restricted expression of a single light chain class.

APPLICATION

To ensure optimal assay performance, AREX recommends conducting reagent titration tailored to each testing system for optimal detection results.

IHC	1:100 - 1:200
-----	---------------

*Results are sample-specific. Please refer to your local assay conditions and test parameters for reference.

PRODUCT OVERVIEW

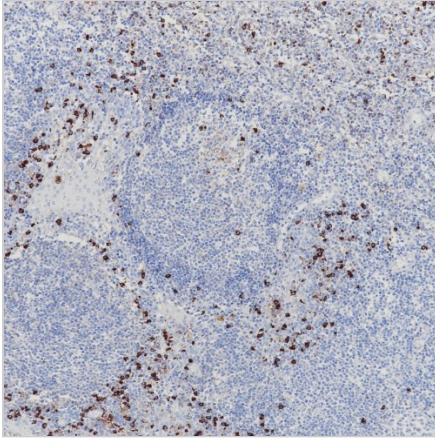
Predicted Molecular Wt	23kDa
Purity	ProA affinity purified IgG
Subcellular location	Cytoplasm
Swissprot ID	P0CG04
Immunogen	Synthetic peptide corresponding to residues within N-terminus of immunoglobulin lambda constant 1 was used as an immunogen
Storage Buffer	PBS 59%, Sodium azide 0.01%, Glycerol 40%, BSA 0.05%
Recommended method	Heat induced epitope retrieval with Tris-EDTA buffer (pH 9.0), primary antibody incubate at RT (18°C-25°C) for 30 minutes

*AREX continuously optimizes our products. Webpage content may not reflect the latest updates. For inquiries, please contact info@arexbio.com or your local distributor.

*Clone Number, Reactivity, Source/Host and Clonality can be found in the product name and Key Features section above.

DATASHEET**Lambda Light Chains Rabbit Monoclonal Antibody(ARB981)**

CAT. NO. ARB6773

DATA

Immunohistochemical staining of human tonsil tissue using Lambda Light Chains Rabbit Monoclonal Antibody(ARB981)

STORAGE

Store at 4°C short term. For long term storage, store at -20°C, avoiding freeze/thaw cycles.

NOTE

For Research Use Only. Not for diagnostic, therapeutics, prophylactic or in vivo use.

More information: www.arexbio.com