

DATASHEET

LAG-3 Rabbit Monoclonal Antibody(ARB980)

CAT. NO. ARB6772

KEY FEATURES

Target	LAG-3	Clonality	Monoclonal
Clone ID	ARB980	Applications	IHC
Source / Host	Rabbit	Dilution	1:100-1:200
Reactivity	Human	Storage	at-20°C

BACKGROUND

Immunocyte activation gene 3 (LAG-3, CD223) is an immune checkpoint control protein that negatively regulates T cells and immune responses. A CD4-like member of the Ig superfamily, LAG3 contains an extracellular IgV and three IgC domains, a transmembrane domain, and a short cytoplasmic region. LAG3 is primarily expressed by activated CD4+ T cells, CD8+ T cells, Tregs and NK cells, where it's activated by MHC Class II molecules, its only known ligand. While it was initially shown to activate Treg cells, LAG3 can also inhibit CD8+ T cells. LAG3 is often co-expressed with PD-1 on the surface of tumor infiltrating lymphocytes, where the two proteins act independently to contribute to tumor-mediated immune suppression. Blockade of LAG3 is a promising strategy for neoplastic intervention.

APPLICATION

To ensure optimal assay performance, AREX recommends conducting reagent titration tailored to each testing system for optimal detection results.

IHC	1:100 - 1:200
-----	---------------

*Results are sample-specific. Please refer to your local assay conditions and test parameters for reference.

PRODUCT OVERVIEW

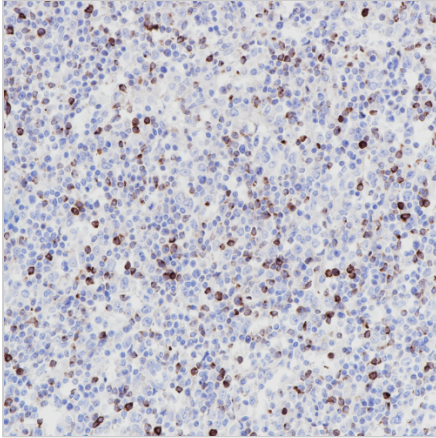
Predicted Molecular Wt	57kDa
Purity	ProA affinity purified IgG
Subcellular location	Membrane
Swissprot ID	P18627
Immunogen	Synthetic peptide within Human LAG-3
Storage Buffer	PBS 59%, Sodium azide 0.01%, Glycerol 40%, BSA 0.05%
Recommended method	Heat induced epitope retrieval with Tris-EDTA buffer (pH 9.0), primary antibody incubate at RT (18°C-25°C) for 30 minutes

*AREX continuously optimizes our products. Webpage content may not reflect the latest updates. For inquiries, please contact info@arexbio.com or your local distributor.

*Clone Number, Reactivity, Source/Host and Clonality can be found in the product name and Key Features section above.

DATASHEET**LAG-3 Rabbit Monoclonal Antibody(ARB980)**

CAT. NO. ARB6772

DATA

Immunohistochemical staining of human lymphoma tissue using LAG-3 Rabbit Monoclonal Antibody (ARB980)

STORAGE

Store at 4°C short term. For long term storage, store at -20°C, avoiding freeze/thaw cycles.

NOTE

For Research Use Only. Not for diagnostic, therapeutics, prophylactic or in vivo use.

More information: www.arexbio.com