

DATASHEET

L1CAM Rabbit Monoclonal Antibody(ARB979)

CAT. NO. ARB6771

KEY FEATURES

Target	L1CAM	Clonality	Monoclonal
Clone ID	ARB979	Applications	IHC
Source / Host	Rabbit	Dilution	1:100-1:200
Reactivity	Human	Storage	at-20°C

BACKGROUND

L1CAM, a neural cell adhesion molecule which is involved in the dynamics of cell adhesion and in the generation of transmembrane signals at tyrosine kinase receptors. During brain development, L1CAM is critical in multiple processes, including neuronal migration, axonal growth and fasciculation, and synaptogenesis. In the mature brain, L1CAM plays a role in the dynamics of neuronal structure and function, including synaptic plasticity. L1CAM's cytoplasmic expression mainly in CNS, PNS and distal renal tubules. L1CAM has become a marker for evaluating the malignancy and prognosis of ovarian cancer, endometrial cancer, melanoma and other tumors.

APPLICATION

To ensure optimal assay performance, AREX recommends conducting reagent titration tailored to each testing system for optimal detection results.

IHC	1:100 - 1:200
-----	---------------

*Results are sample-specific. Please refer to your local assay conditions and test parameters for reference.

PRODUCT OVERVIEW

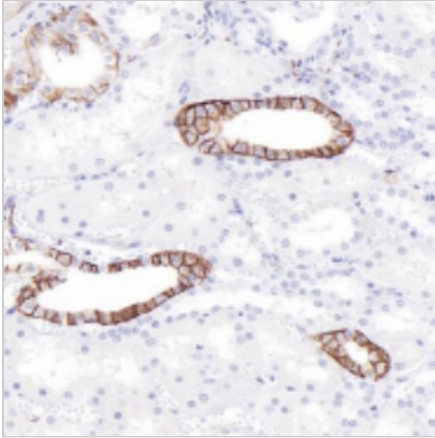
Predicted Molecular Wt	140kDa
Purity	ProA affinity purified IgG
Subcellular location	Cytoplasm
Swissprot ID	P32004
Immunogen	Synthetic peptide.
Storage Buffer	PBS 59%, Sodium azide 0.01%, Glycerol 40%, BSA 0.05%
Recommended method	Heat induced epitope retrieval with Tris-EDTA buffer (pH 9.0), primary antibody incubate at RT (18°C-25°C) for 30 minutes

*AREX continuously optimizes our products. Webpage content may not reflect the latest updates. For inquiries, please contact info@arexbio.com or your local distributor.

*Clone Number, Reactivity, Source/Host and Clonality can be found in the product name and Key Features section above.

DATASHEET**L1CAM Rabbit Monoclonal Antibody(ARB979)**

CAT. NO. ARB6771

DATA

Immunohistochemical staining of human colon carcinoma tissue using L1CAM Rabbit Monoclonal Antibody(ARB979)

STORAGE

Store at 4°C short term. For long term storage, store at -20°C, avoiding freeze/thaw cycles.

NOTE

For Research Use Only. Not for diagnostic, therapeutics, prophylactic or in vivo use.

More information: www.arexbio.com