

## DATASHEET

# IgM Rabbit Monoclonal Antibody(ARB975)

CAT. NO. ARB6767

### KEY FEATURES

Target	IgM	Clonality	Monoclonal
Clone ID	ARB975	Applications	IHC
Source / Host	Rabbit	Dilution	1:100-1:200
Reactivity	Human	Storage	at-20°C

### BACKGROUND

Anti-IgM reacts with immunoglobulin mu (IgM) chains. IgM is one of the predominant surface immunoglobulins on B-lymphocytes. This antibody is useful when differentiating and sub-classifying hematolymphoid neoplasms.

### APPLICATION

To ensure optimal assay performance, AREX recommends conducting reagent titration tailored to each testing system for optimal detection results.

IHC	1:100 - 1:200
-----	---------------

\*Results are sample-specific. Please refer to your local assay conditions and test parameters for reference.

### PRODUCT OVERVIEW

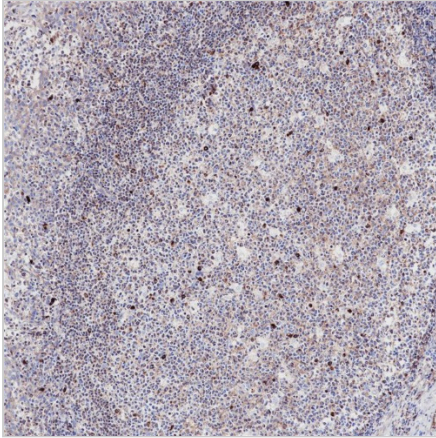
Predicted Molecular Wt	75 kDa
Purity	Tissue culture supernatant
Subcellular location	Cytoplasm
Swissprot ID	P01871
Immunogen	Full length native protein (purified) of Human IgM
Storage Buffer	Tissue culture supernatant 50%, Tris glycine 9.85%, Sodium azide 0.05%, Glycerol 40%, BSA 0.1%
Recommended method	Heat induced epitope retrieval with Tris-EDTA buffer (pH 9.0), primary antibody incubate at RT (18° C-25° C) for 30 minutes.

\*AREX continuously optimizes our products. Webpage content may not reflect the latest updates. For inquiries, please contact [info@arexbio.com](mailto:info@arexbio.com) or your local distributor.

\*Clone Number, Reactivity, Source/Host and Clonality can be found in the product name and Key Features section above.

**DATASHEET****IgM Rabbit Monoclonal Antibody(ARB975)**

CAT. NO. ARB6767

**DATA**

Immunohistochemical staining of human tonsil tissue sections using IgM Rabbit Monoclonal Antibody (ARB975)

**STORAGE**

Store at 4°C short term. For long term storage, store at -20°C, avoiding freeze/thaw cycles.

**NOTE**

For Research Use Only. Not for diagnostic, therapeutics, prophylactic or in vivo use.

More information: [www.arexbio.com](http://www.arexbio.com)