

## DATASHEET

# IgD Rabbit Monoclonal Antibody(ARB973)

CAT. NO. ARB6765

### KEY FEATURES

Target	IgD	Clonality	Monoclonal
Clone ID	ARB973	Applications	IHC
Source / Host	Rabbit	Dilution	1:100-1:200
Reactivity	Human	Storage	at-20°C

### BACKGROUND

Immunoglobulins are produced by cells of the B-lymphocyte lineage. Based on differences in the heavy chain, five immunoglobulin isotypes are known as IgA, IgG, IgM, IgD and IgE. Human IgD exists in two forms: secreted IgD (secIgD), present in small amounts in human serum, and membrane-bound IgD (mIgD), present on the surface of mature B cells. mIgD is co-expressed with membrane-bound IgM (mIgM) and plays a major role as an antigenic receptor on the surface of B-lymphocytes. IgD is expressed in normal and neoplastic mantle B cells. It is absent in most cells of normal splenic marginal zone but present in 30% to 40% of splenic marginal zone lymphomas (MZLs). Additionally, IgD may be a marker for the identification of nodular lymphocyte predominant hodgkin lymphoma. Antibody to IgD is useful for classification of B-cell derived lymphomas and plasmacytomas.

### APPLICATION

To ensure optimal assay performance, AREX recommends conducting reagent titration tailored to each testing system for optimal detection results.

IHC	1:100 - 1:200
-----	---------------

\*Results are sample-specific. Please refer to your local assay conditions and test parameters for reference.

### PRODUCT OVERVIEW

Predicted Molecular Wt	42kDa
Purity	ProA affinity purified IgG
Subcellular location	Cytoplasm
Swissprot ID	P01880
Immunogen	Synthetic peptide corresponding to residues within aa50-150 of Human IgD was used as an immunogen
Storage Buffer	PBS 59%, Sodium azide 0.01%, Glycerol 40%, BSA 0.05%
Recommended method	Heat induced epitope retrieval with Tris-EDTA buffer (pH 9.0), primary antibody incubate at RT (18°C-25°C) for 30 minutes

\*AREX continuously optimizes our products. Webpage content may not reflect the latest updates. For inquiries, please contact [info@arexbio.com](mailto:info@arexbio.com) or your local distributor.

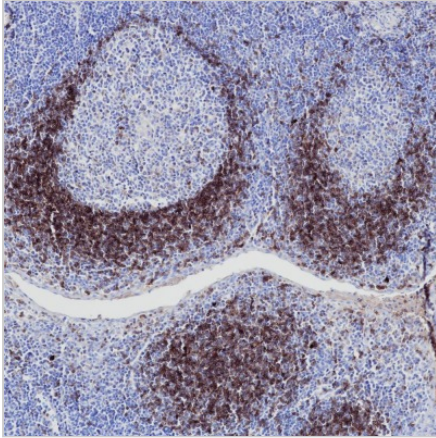
\*Clone Number, Reactivity, Source/Host and Clonality can be found in the product name and Key Features section above.

**DATASHEET**

**IgD Rabbit Monoclonal Antibody(ARB973)**

CAT. NO. ARB6765

**DATA**



Immunohistochemical staining of human tonsil tissue using IgD Rabbit Monoclonal Antibody(ARB973)

**STORAGE**

Store at 4°C short term. For long term storage, store at -20°C, avoiding freeze/thaw cycles.

**NOTE**

For Research Use Only. Not for diagnostic, therapeutics, prophylactic or in vivo use.

More information: [www.arexbio.com](http://www.arexbio.com)