

DATASHEET

HLA-G Rabbit Monoclonal Antibody(ARB969)

CAT. NO. ARB6761

KEY FEATURES

Target	HLA-G	Clonality	Monoclonal
Clone ID	ARB969	Applications	IHC
Source / Host	Rabbit	Dilution	1:100-1:200
Reactivity	Human	Storage	at-20°C

BACKGROUND

HLA-G (HLA-G histocompatibility antigen, class I, G) is a non-classical MHC molecule expressed by trophoblasts in placenta, thymic epithelial cells, and some tumors. Alternative splicing leads to generation of at least six isoforms, four that are transmembrane proteins and two that are soluble. It is an inhibitory molecule involved in immune tolerance and escape, originally studied for its role in maternal tolerance of the fetus during pregnancy. HLA-G binds ILT2, ILT4, and KIR2DL4, playing a role in the regulation of natural killer, T, and monocyte/macrophage cells. Its involvement in evasion of immune response makes it a potential target for immunotherapy. HLA-G is mainly expressed in placental trophoblastic cells and choriocarcinoma cells.

APPLICATION

To ensure optimal assay performance, AREX recommends conducting reagent titration tailored to each testing system for optimal detection results.

IHC	1:100 - 1:200
-----	---------------

*Results are sample-specific. Please refer to your local assay conditions and test parameters for reference.

PRODUCT OVERVIEW

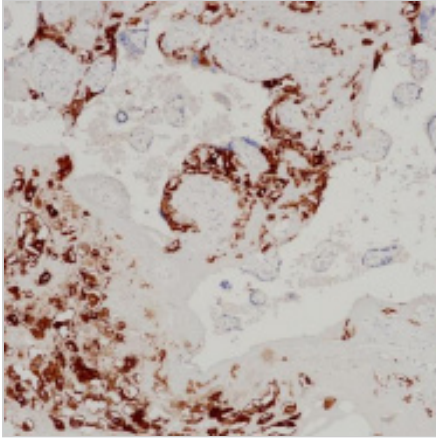
Predicted Molecular Wt	38kDa
Purity	ProA affinity purified IgG
Subcellular location	Membrane
Swissprot ID	P17693
Immunogen	Recombinant protein fragment of human HLA-G was used as an immunogen.
Storage Buffer	PBS 59%, Sodium azide 0.01%, Glycerol 40%, BSA 0.05%
Recommended Method	Heat induced epitope retrieval with Tris-EDTA buffer (pH 9.0), primary antibody incubate at RT (18°C-25°C) for 30 minutes

*AREX continuously optimizes our products. Webpage content may not reflect the latest updates. For inquiries, please contact info@arexbio.com or your local distributor.

*Clone Number, Reactivity, Source/Host and Clonality can be found in the product name and Key Features section above.

DATASHEET**HLA-G Rabbit Monoclonal Antibody(ARB969)**

CAT. NO. ARB6761

DATA

Immunohistochemistry (Formalin/PFA-fixed paraffinembedded sections) analysis of human placenta labelling HLA-G with ARB6761.

STORAGE

Store at 4°C short term. For long term storage, store at -20°C, avoiding freeze/thaw cycles.

NOTE

For Research Use Only. Not for diagnostic, therapeutics, prophylactic or in vivo use.

More information: www.arexbio.com