

**DATASHEET**

**hCG Rabbit Monoclonal Antibody(ARB966)**

CAT. NO. ARB6758

**KEY FEATURES**

Target	hCG	Clonality	Monoclonal
Clone ID	ARB966	Applications	IHC
Source / Host	Rabbit	Dilution	1:100-1:200
Reactivity	Human	Storage	at-20°C

**BACKGROUND**

Human chorionic gonadotropin antibody (hCG) is a glycoprotein hormone synthesized in syncytiotrophoblastic cells of placenta and in certain trophoblastic tumors. The hormone-specific alpha chains have molecular weights of 13 kDa.HCG is found in moles and choriocarcinoma, chorionic components of germ cell tumours, and syncytiotrophoblast like cells in seminoma/dysgerminoma and embryonal carcinoma.In diagnostic pathology, hCG is a useful marker for classification of germ cell tumours, identification of extragonadal germ cell tumours.

**APPLICATION**

To ensure optimal assay performance, AREX recommends conducting reagent titration tailored to each testing system for optimal detection results.

IHC	1:100 - 1:200
-----	---------------

\*Results are sample-specific. Please refer to your local assay conditions and test parameters for reference.

**PRODUCT OVERVIEW**

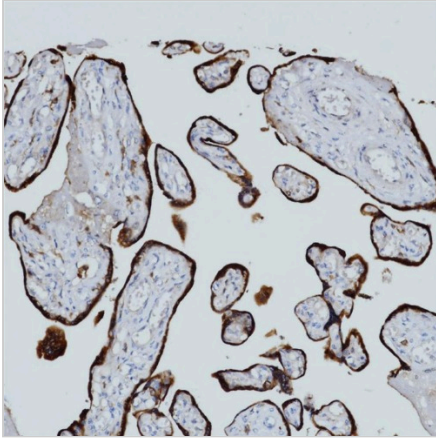
Predicted Molecular Wt	13kDa
Purity	ProA affinity purified IgG
Subcellular location	Cytoplasm
Swissprot ID	P01215
Immunogen	Synthetic peptide corresponding to residues within aa1-100 of hCG was used as an immunogen
Storage Buffer	PBS 59%, Sodium azide 0.01%, Glycerol 40%, BSA 0.05%
Recommended method	Heat induced epitope retrieval with Tris-EDTA buffer (pH 9.0), primary antibody incubate at RT (18°C-25°C) for 30 minutes

\*AREX continuously optimizes our products. Webpage content may not reflect the latest updates. For inquiries, please contact [info@arexbio.com](mailto:info@arexbio.com) or your local distributor.

\*Clone Number, Reactivity, Source/Host and Clonality can be found in the product name and Key Features section above.

**DATASHEET****hCG Rabbit Monoclonal Antibody(ARB966)**

CAT. NO. ARB6758

**DATA**

Immunohistochemical staining of human placenta tissue using hCG Rabbit Monoclonal Antibody(ARB966)

**STORAGE**

Store at 4°C short term. For long term storage, store at -20°C, avoiding freeze/thaw cycles.

**NOTE**

For Research Use Only. Not for diagnostic, therapeutics, prophylactic or in vivo use.

More information: [www.arexbio.com](http://www.arexbio.com)